



National Disease Surveillance
& Response (NDSR)

Weekly Epidemiological Report–31st

Date: 26 July to 01 Aug 2020

Summary:

- Out of 513 functional Surveillance sentinel sites, 478(93.2%) have submitted reports this week.
- A total of 364,949 new consultations, 133,707 (36.6%) were due to Surveillance targeted diseases.
- The main causes of consultations in this week were Acute Diarrheal Diseases, 61,818 cases, 17% out of total new consultations, ARI (Cough & Cold), 60,855 cases, 16.7% out of total new consultations and Pneumonia, 8,880 cases, 2.4% out of total new consultations.
- A total of 192 deaths were reported this week, of which 29 were due to Surveillance targeted diseases, which includes 16 Pneumonia deaths, 06 Meningitis deaths, 04 Acute Diarrheal Disease deaths, 02 Measles deaths and 01 Acute Viral Hepatitis death.
- Four CCHF outbreaks were reported from Kabul, Balkh and Helmand provinces and 553 COVID-19 lab confirmed cases reported from all over the country.

Figure1: Surveillance/NDSR Sentinel Sites with GPS location by type of Health Facility

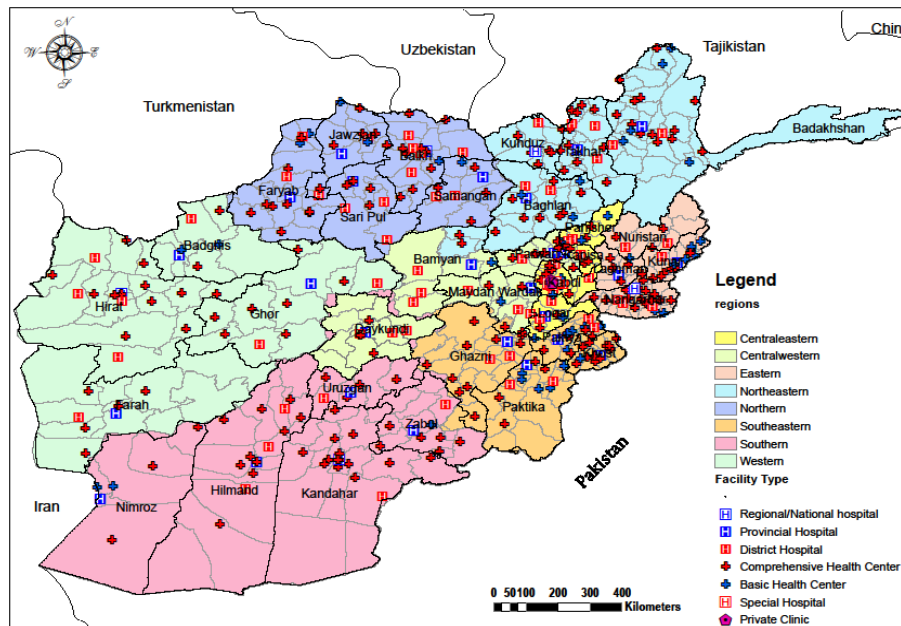


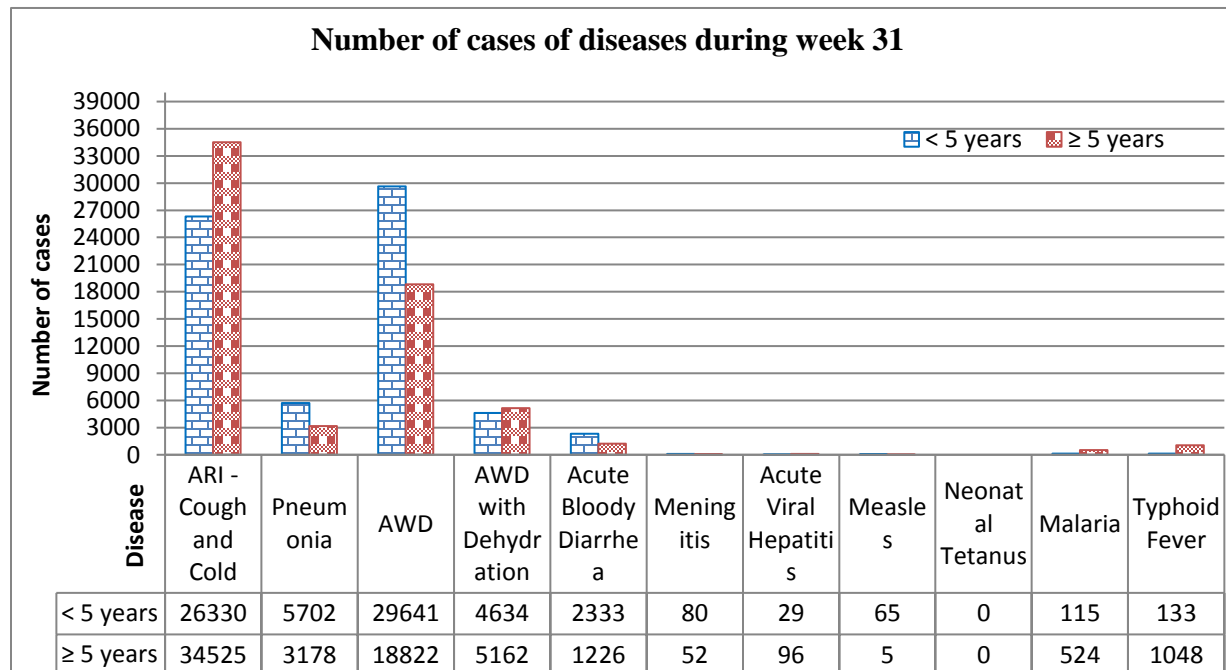
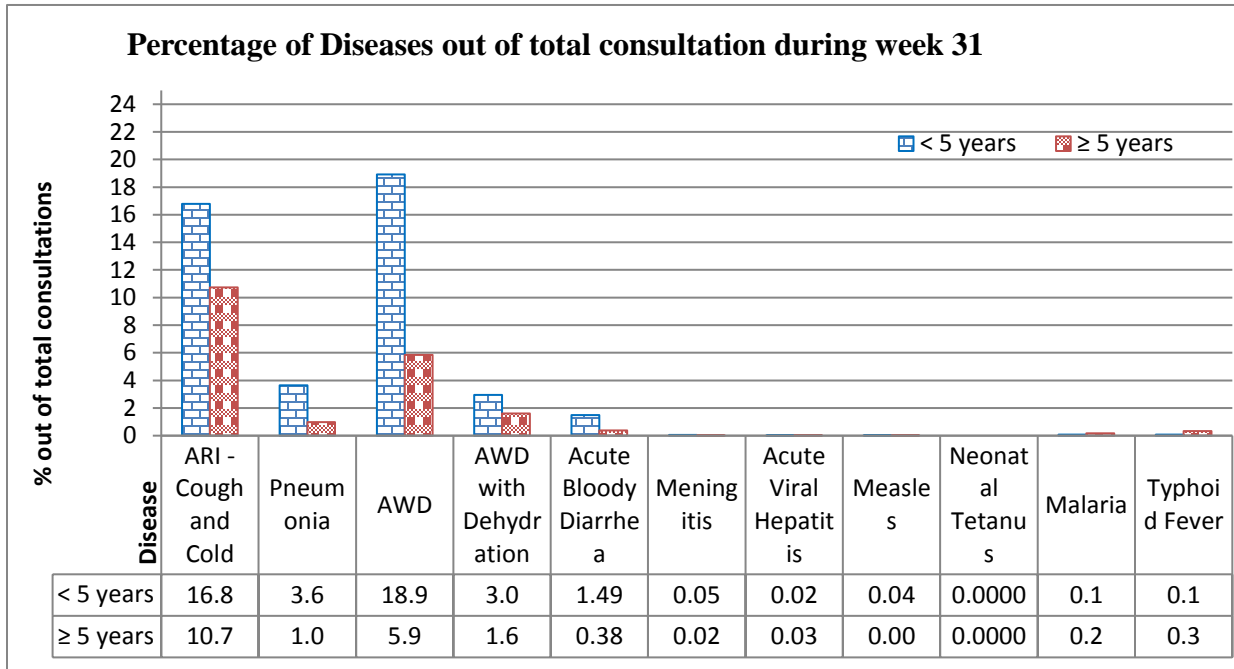
Table 1: Coverage of NDSR Surveillance System

Type of Health Facility	RH/PH	DH	CHC/BHC	Special Hospital	Other	Total
Total Health Facilities (HF)	37	88	1,315	32	1171	3,718
HF covered by NDSR-Plus	32	77	389	12	3	513

Indicator – based Surveillance (IBS):

The Indicator-based surveillance component of NDSR reports 16 priority conditions/infectious diseases from sentinel sites on weekly bases. The data is compared with previous weeks and the corresponding week of previous years and the alert and epidemic threshold is checked to see if disease incidence has crossed these levels and necessary action is initiated.

Figure 2: NDSR targeted diseases

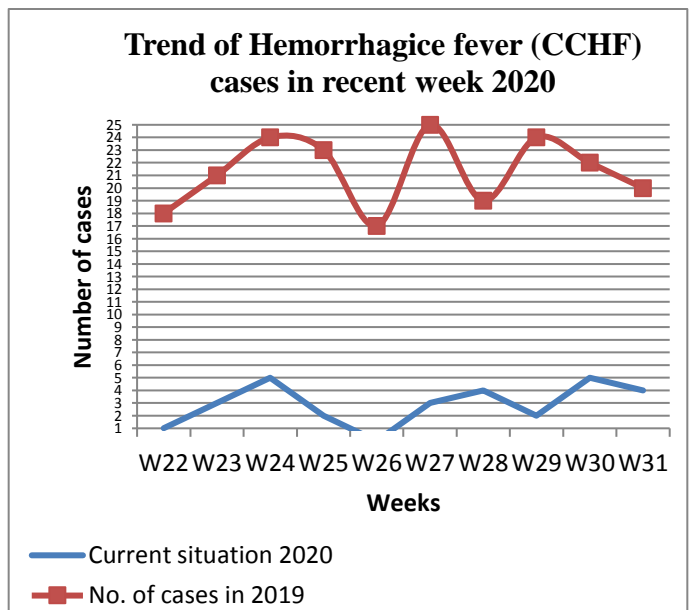
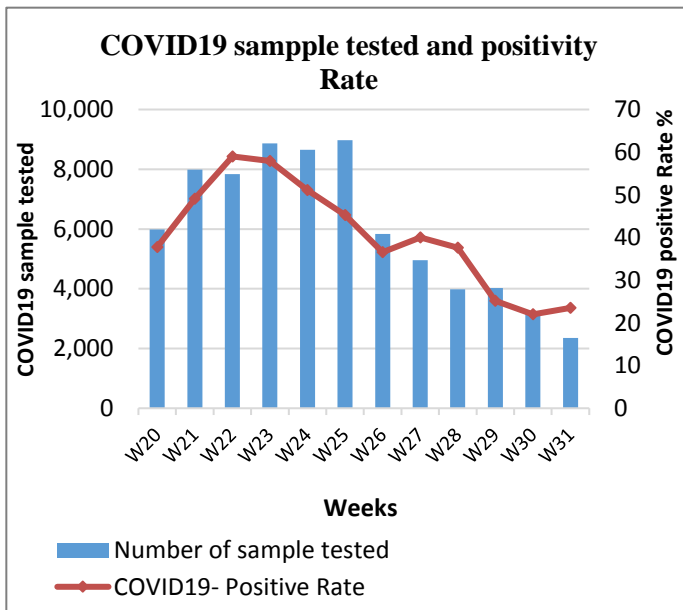
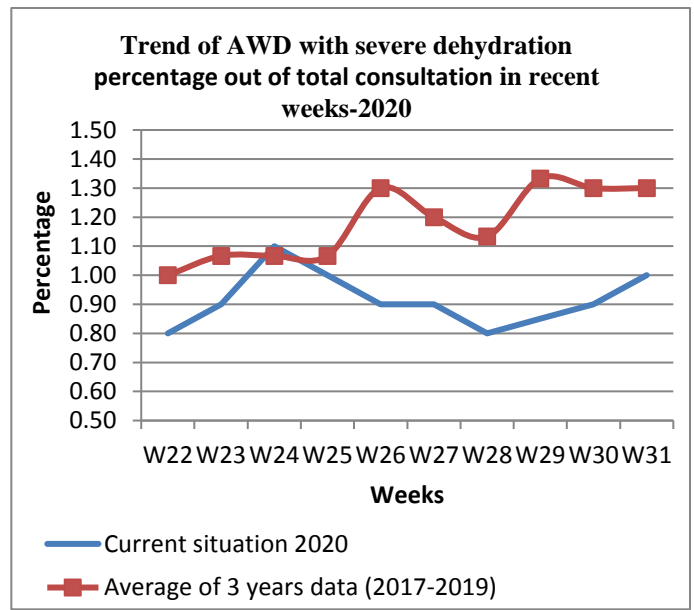
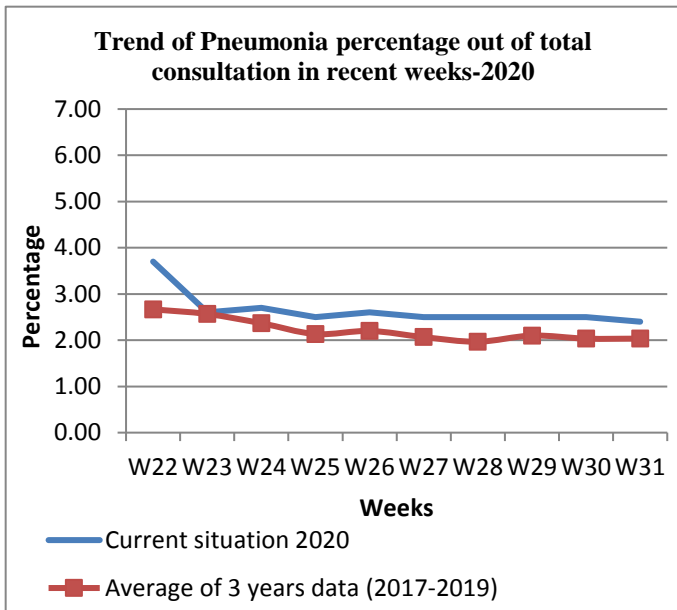


Vaccine-Preventable Diseases (VPDs):

Table 2: Cases and deaths due to VPDs by age group during week 31st, 2020

Diseases	Cases			Deaths			CFR/100
	<5 years	≥ 5 years	Total	<5 years	≥ 5 years	Total	
Measles	65	5	70	2	0	2	2.86

Seasonal Diseases:



During week 31st total of (04) CCHF outbreaks detected, investigated and responded by NDSR teams and the related stakeholders. The details are as below

Suspected CCHF Outbreaks								
Reported dated	Province	District	Village	Total cases	Total deaths	Age	Occupation	Recommendation/Action take
20 July 2020	Kabul	District 8	Karte Now	1	0	60	Jobless	During this week 04 suspected CCHF cases were reported from, Kabul, Balkh, and Helmand provinces, the cases had probable contact with animals or the tissues of the animal, case management was done and health education sessions were conducted. No death was reported from CCHF in this week
01 Aug 2020	Kabul	District 13	Barchi	1	0	45	Animal dealer	
27 July 2020	Balkh	Chimtal	Naward	1	0	55	Jobless	
30 July 2020	Helmand	Markaz	Safakhan	1	0	23	Daily wage worker	

Figure 3: Outbreaks investigated during the week 04th, 2020

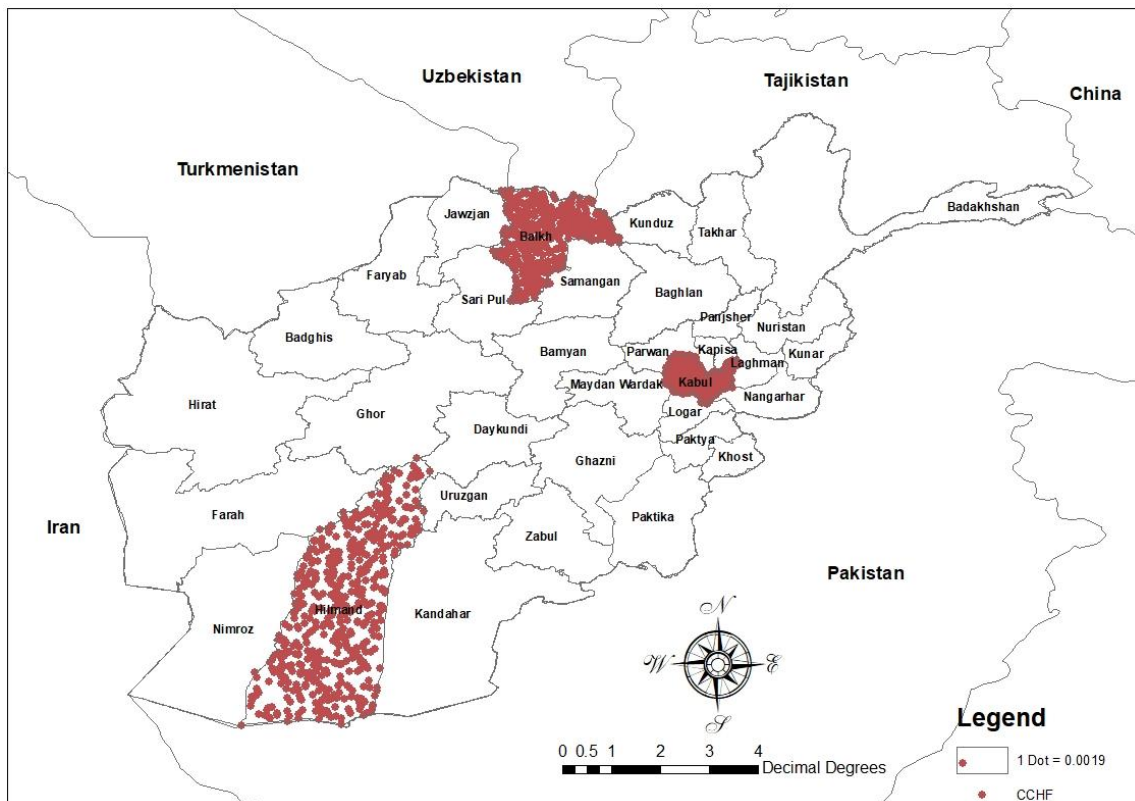


Table 2: Updates on the outbreaks reported during 2020 (29 Dec 2019 to 01 Aug 2020)

Disease/Event	No. of outbreaks	No. of Lab confirmed outbreaks	No. of cases	No. of Deaths
CCHF	52	0	54	4
Measles	23	2	270	3
Pertussis	7	0	42	0
Scabies	7	0	320	0
Chickenpox	6	0	103	0
Dog bites/Suspected Rabies	5	0	58	0
Pneumonia	2	0	208	46
Acute Bloody diarrhea	1	0	120	0
Acute Viral Hepatitis	1	0	10	0
COVID 19	1	1	36710	1284
Mumps	1	0	51	0
Leishmaniasis	1	1	12	0
Grand Total	107	4	37958	1337

Laboratory surveillance:

A total of 2,351 specimens for suspected COVID 19 were received by CPHL. Out of which 553 specimens were confirmed for COVID 19.

Influenza Surveillance activities

In Epidemiological week 31st, 2020, we have received Epidemiological reports from 9 out of 9 sentinel sites. (Kabul, Kapisa, Balkh, Herat, Kandahar, Bamyan, Baghlan, Nangarhar, and Paktya). Out of all new hospital admission, 76 (3%) Severe Acute Respiratory Infections cases were reported and 68% of them were among under 5 years old. The proportion of SARI cases was decreased as compared to week 30th, 2020. One SARI associated deaths reported this week. At the 9 provincial levels, the top sentinel sites with the highest proportion of SARI cases were Kabul (20%) and Kapisa (17%) followed by Bamyan (10%). In this Epidemiological week, our field staff sent 6 SARI and 10 ILI specimens to the National Influenza Center (NIC)

COVID-19 Surveillance activities

In this week 2,351 specimens for suspected COVID-19 were tested. Out of which 553 samples are confirmed for COVID 19 by rtPCR. The cases have been isolated either in the isolation wards or in the homes, contact tracing has been started and will be continued till 14 days of their last contact with the cases.

Surveillance screening teams screened all the passengers in the points of entries, all of the screened passengers have been checked for fever, and health education are conducted for them. Totally 190 RRT teams are active in case detection and response for COVID 19 suspected cases in all 34 provinces.

Challenges:

- Poor follow-up for contacts of the lab confirmed cases for early detection of COVID-19 cases.
- No sampling from SARI (Severe Acute Respiratory Infection) cases in adults (≥ 18 years) in order to early detect COVID-19 cases.
- Weak reporting of COVID-19 cases from public and private HFs, and community

Recommendations:

- Contact tracing for all contacts of the lab confirmed cases should be implemented as still only 24% of the contacts are traced.
- Community surveillance for COVID-19 should be strengthened in all public and private health facilities and CHW should also report these cases
- Clinical case definition for COVID-19 is prepared and shared by surveillance department, all public and private HFs should report the clinical COVID-19 cases based on the clinical case definition
- SARI (Severe Acute Respiratory Infection) surveillance in adults (≥ 18 years) should be strengthened and lab samples from those cases who did not respond with antibiotic during 48 hours should be collected.
- Health education session on COVID-19 should be conducted in all public and private HFs in the provinces
- **EPI:** As the system detected 70 suspected Measles cases, further prevention and control measures should be conducted by EPI team.
- The findings should be analyzed further in different levels and appropriate actions to be taken by the concerned departments.