



National Disease Surveillance
& Response (NDSR)

NDSR Weekly Epidemiological Report–35th

Date: 29- 08, 2021 to 04- 09, 2021

Summary:

- Out of 513 functional Surveillance sentinel sites, 450 (88 %) have submitted reports this week.
- A total of 395,088 new consultations, 157,561 (39.9%) were due to Surveillance targeted diseases.
- The main causes of consultations this week were ARI (Cough & Cold), 75,015 cases, (19 %) out of total new consultations, Acute Diarrheal Diseases 58,555 cases (14.8%) out of total new consultations and Pneumonia, 11,370 cases (2.9%) out of total new consultations.
- A total of 166 deaths were reported this week, of which 51 were due to Surveillance targeted diseases, which includes 22 COVID-19 deaths, 16 Pneumonia deaths, 07 Acute Diarrheal Diseases deaths, 03 suspected Measles deaths, 02 Pregnancy related deaths, 01 Typhoid Fever death.
- A total of 347 Measles cases with 01 death were reported in this week.
- Also, in this week, 382 COVID-19 confirmed cases reported from all over the country.

Figure1: Surveillance/NDSR Sentinel Sites with GPS location by type of Health Facility, 2021

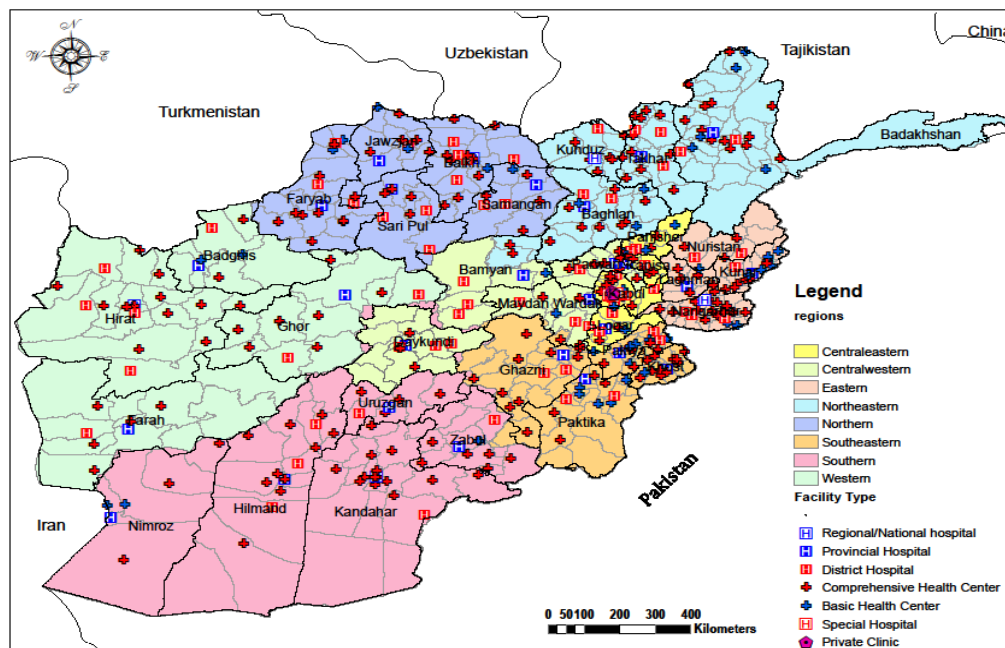


Table 1: Coverage of NDSR Surveillance System

Type of Health Facility	RH/PH	DH	CHC/BHC	Special Hospital	Other	Total
Total Health Facilities (HF)	37	88	1,315	32	1171	2,643
HF covered by NDSR-Plus	32	77	389	12	3	513

Indicator - based Surveillance (IBS):

The Indicator-based surveillance component of NDSR report 17 priority conditions/infectious diseases from sentinel sites on weekly bases. The data is compared with previous weeks and the corresponding weeks of previous years and the alert and epidemic threshold is checked to see if disease incidence has crossed these levels and necessary action is initiated.

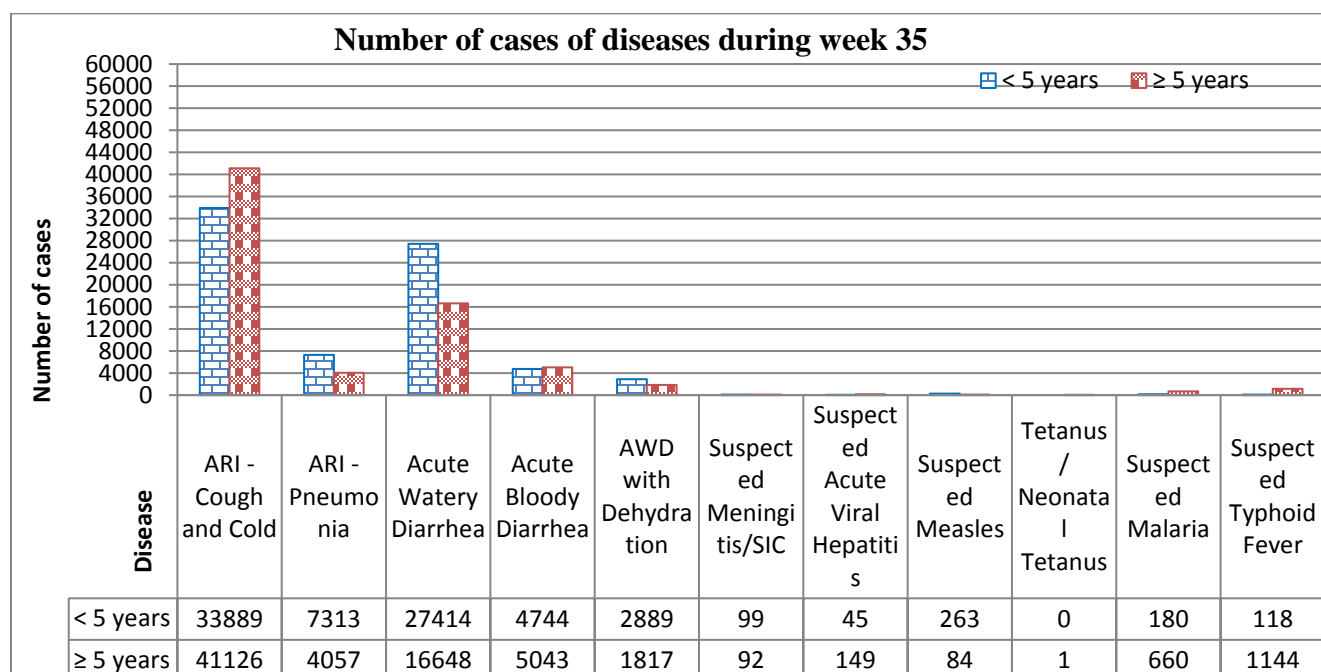
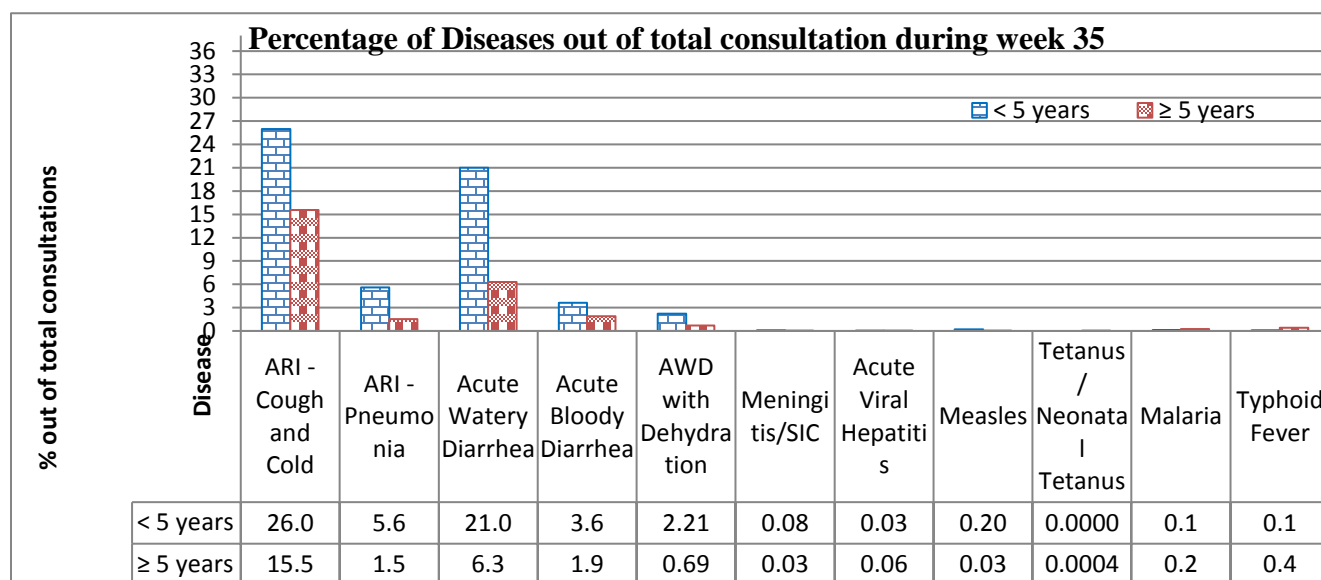


Table 2: Cases and deaths due to VPDs by age group during week 35th, 2021

Diseases	Cases			Deaths			CFR/100 Total
	<5 years	≥ 5 years	Total	<5 years	<5 years	≥ 5 years	
Suspected Measles	263	84	347	1	0	1	0.29

Seasonal Diseases:

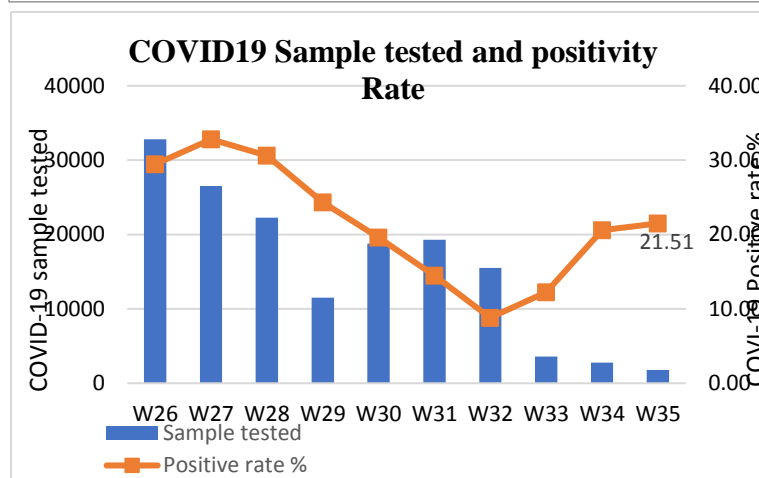
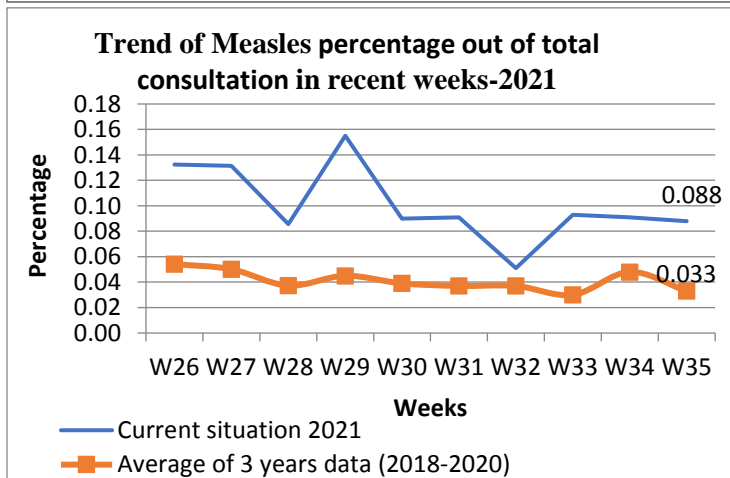
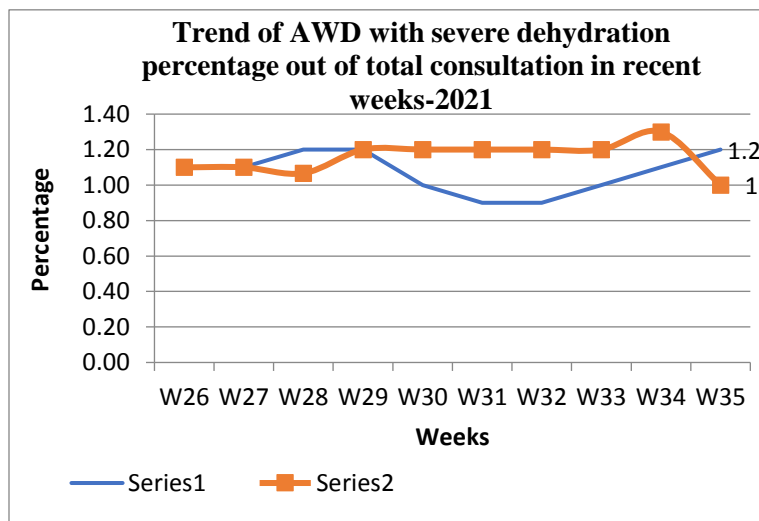
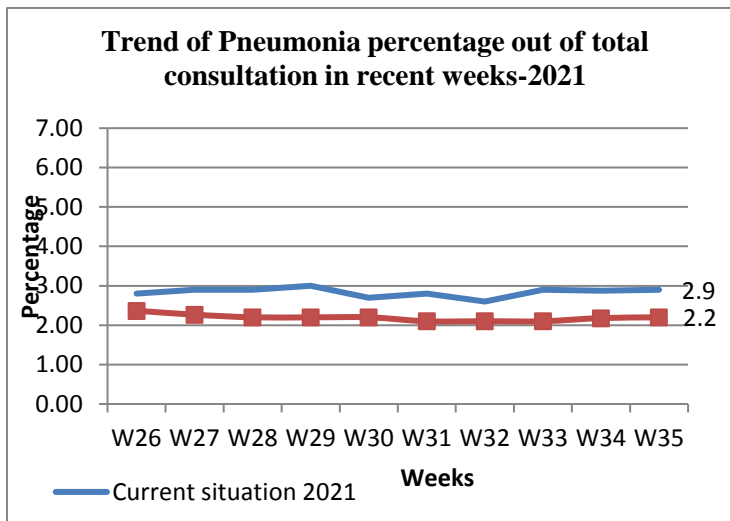


Figure 3: COVID-19cases and CCHF outbreak during the week 35th 2021

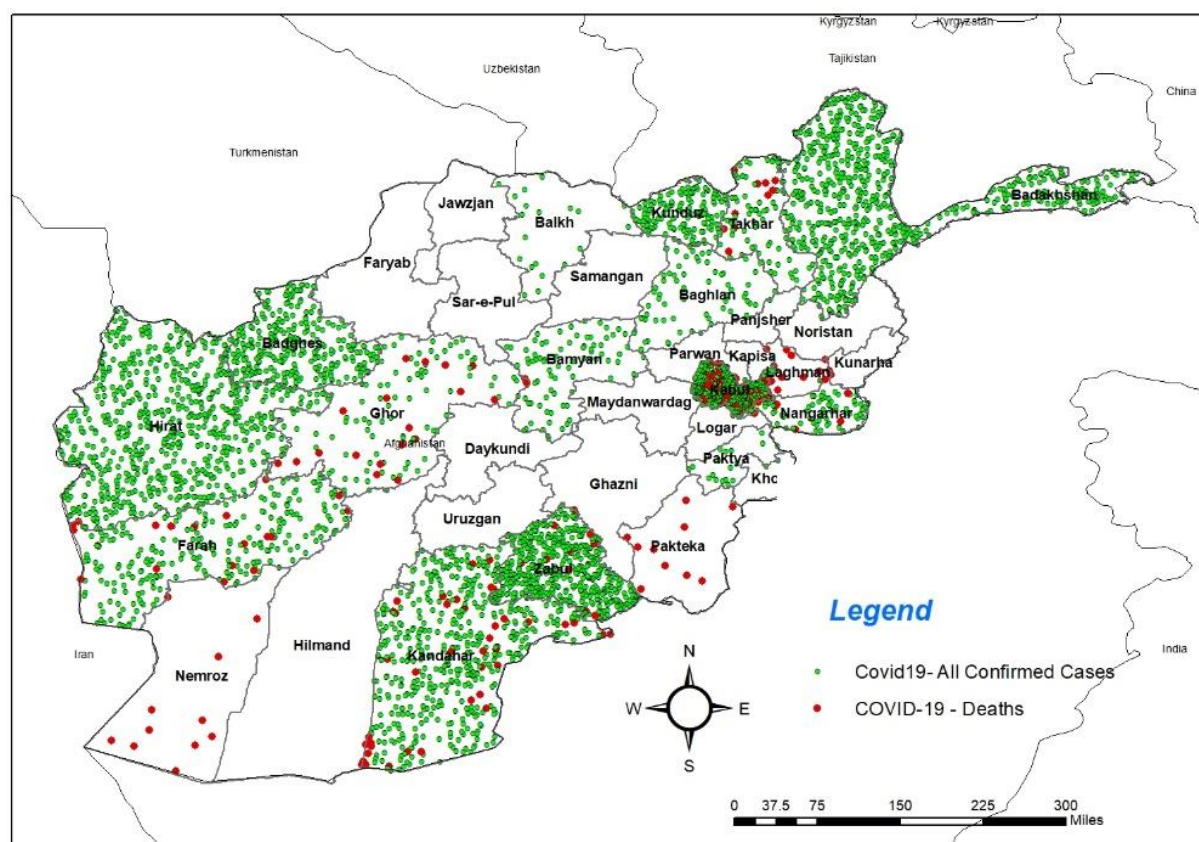


Table 3: Updates on the outbreaks reported during 2021 (27 Dec 2020 to 04, September 2021)

Disease/Event	No. of outbreaks	No. of Lab_Confirmed	No. of Cases	Sum of Total Deaths
Measles	89	62	972	35
CCHF	72	21	72	5
Dog bites/Suspected Rabies	10	0	61	0
Pertussis	4	0	38	0
Scabies	3	0	71	0
Diphtheria	3	0	6	1
COVID 19	1	1	101513	4968
ARI	1	0	11	0
Food poisoning	2	0	26	0
Unknown Poisoning	1	0	12	3
Acute Watery Diarrhea	1	0	88	0
Acute Influenza	1	1	5	0
Tick bite	1	0	9	0
Mass psychogenic Illness	1	0	16	0
Gas (CO) Poisoning	1	0	18	0
Chickenpox	1	0	9	0
Grand Total	192	84	102927	5012

Laboratory surveillance:

A total of **1,726** specimens were collected and shipped to CPHL, the regional and private labs. Out of which **382** specimens were confirmed for COVID-19 in this week.

Influenza Surveillance activities:

In Epidemiological week 35th 2021, we have received Epidemiological reports from 9 out of 9 sentinel sites. (Kabul, Kapisa, Balkh, Herat, Kandahar, Bamyan, Baghlan, Nangarhar, and Paktya). Out of all new hospital admissions, 117 (4.6%) Severe Acute Respiratory Infections cases were reported and 68% were under 5 years old. The proportion of SARI cases were slightly decreased as compared to week 34th 2021. Three SARI associated deaths were reported this week. At the 9 provincial levels, the top sentinel sites with the highest proportion of SARI cases were Kapisa (18%), Kabul (17%), and Bamyan (15%). In this epidemiological week, our field staff shipped 27 SARI and 16 ILI specimens to the National Influenza Center (NIC).

COVID-19 Surveillance activities:

In this week, **1,726** specimens were tested for suspected COVID-19. Out of which **382** samples were confirmed for COVID 19 by rtPCR. The cases have been managed either in the isolation wards or in home quarantine.

- COVID-19 cases were decreased in most of the provinces compared to last week (in general 32 % less cases were reported, and 2.1 % lab samples positivity rate increased as compared to last week countrywide).
- Bed occupancy rate (BOR) at the national level is 28%, which decreased 3.5% compared to previous week.

Out of **1,114** contacts of **341** positive cases that were mostly family members with an average of 03 Contacts per one case, and will be continued till 14 days of their last contact with the cases. Also, surveillance screening teams screened all the passengers in the points of entry for fever, and health education was conducted for them, about **112,961** passengers have been screened for COVID-19 in the points of entry of seven provinces (Balkh, Herat, Kandahar, Khust, Kunduz, Nangarhar and Nimroz provinces).

Challenges:

- Shortage of lab consumables for COVID-19 testing in majority of the provinces
- Inadequate lab testing capacity in the country
- No functionality of the RRTs in some of the provinces due to the suspension of World Bank support to health sector

Recommendations:

- Regular supply of COVID-19 lab testing kits and consumables are needed and lab testing capacity needs to be increased and expanded to all the provinces.

- COVID-19 lab samples should be collected from all districts (all PHs, DHs and district centers should collect the lab samples).
- Reactivation of the RRTs in all the provinces, At least one RRT in each province must be kept functional
- EPI: As the system detected 347 suspected Measles cases and 01 death due to Measles, further prevention and control measures should be conducted by the EPI team.
- The findings should be analyzed further in different levels and appropriate actions to be taken by the concerned departments.