



National Disease Surveillance  
& Response (NDSR)

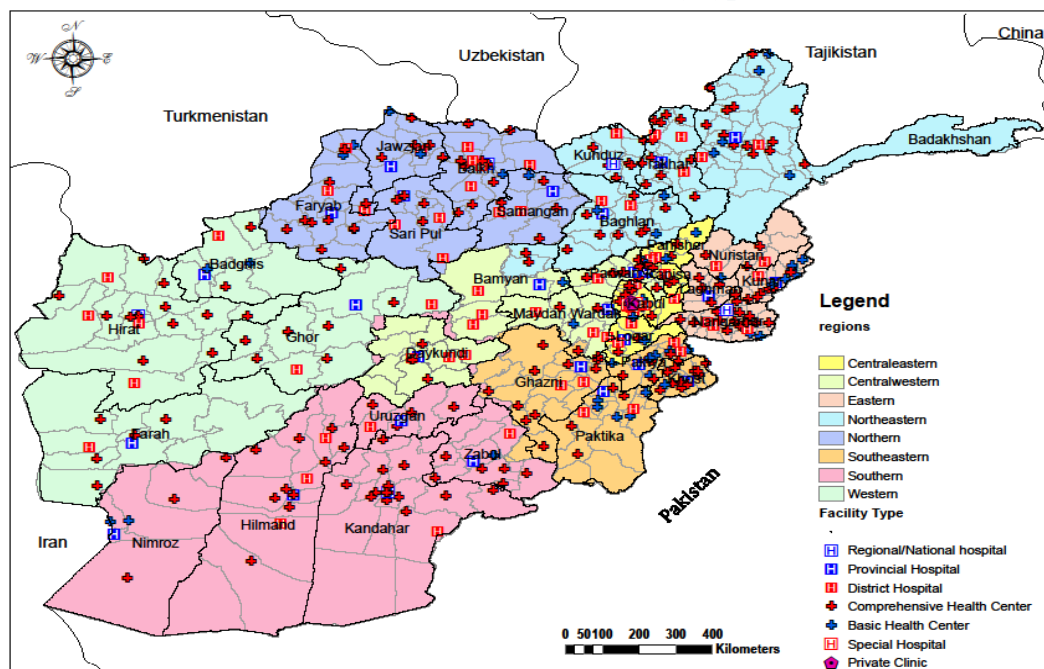
NDSR Weekly Epidemiological Report-40<sup>th</sup>

Date: 03 Oct to 09 Oct, 2021

Summary:

- Out of 513 functional Surveillance sentinel sites, 489 (95.3%) have submitted reports this week.
- A total of 393,605 new consultations, 152,838 (38.8%) were due to Surveillance targeted diseases. That included 81,226 male (53.1%) and 71,612 female (46.9%). Also 75,560 (49.4 %) under five years old and 77278 (50.6%) over five years old reported in this week.
- The main causes of consultations this week were ARI (Cough & Cold), 81,463 cases, (20.7 %) out of total new consultations, Acute Diarrheal Diseases 51,152 cases (13%) out of total new consultations and Pneumonia, 13,317 cases (3.4%) out of total new consultations.
- A total of 173 deaths were reported this week, of which 35 were due to Surveillance targeted diseases, which includes 14 COVID-19 deaths, 15 Pneumonia deaths, 02 suspected Measles deaths, 02 Acute Watery Diarrhea with Dehydration deaths, 01 suspected Meningitis/Severely Ill Child death and 01 suspected Acute Viral Hepatitis death.
- A total of 335 Measles suspected cases with 02 deaths due to measles were reported in this week.
- During this week, 587 AWD hospitalized new cases epi-linked with last month AWD outbreak reported from Kabul province.
- Also, 137 Dengue fever new suspected cases epi-linked with Nangarhar province Dengue fever outbreak were reported,
- Moreover, 217 COVID-19 confirmed cases reported at national level.

Figure1: Surveillance/NDSR Sentinel Sites with GPS location by type of Health Facility, 2021

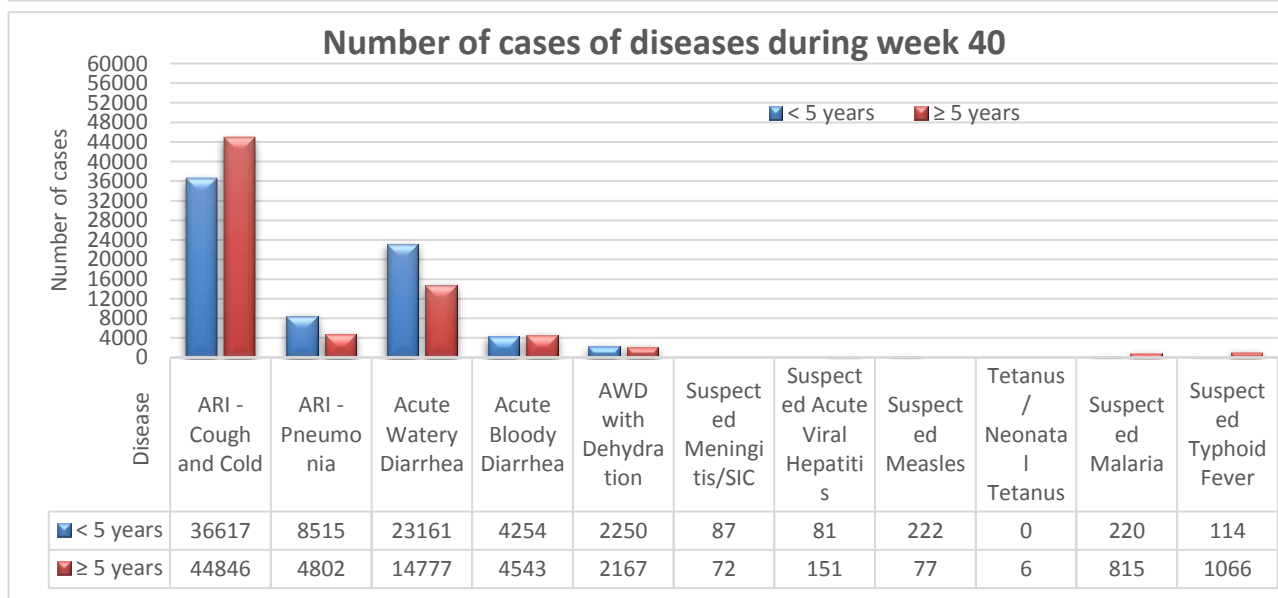
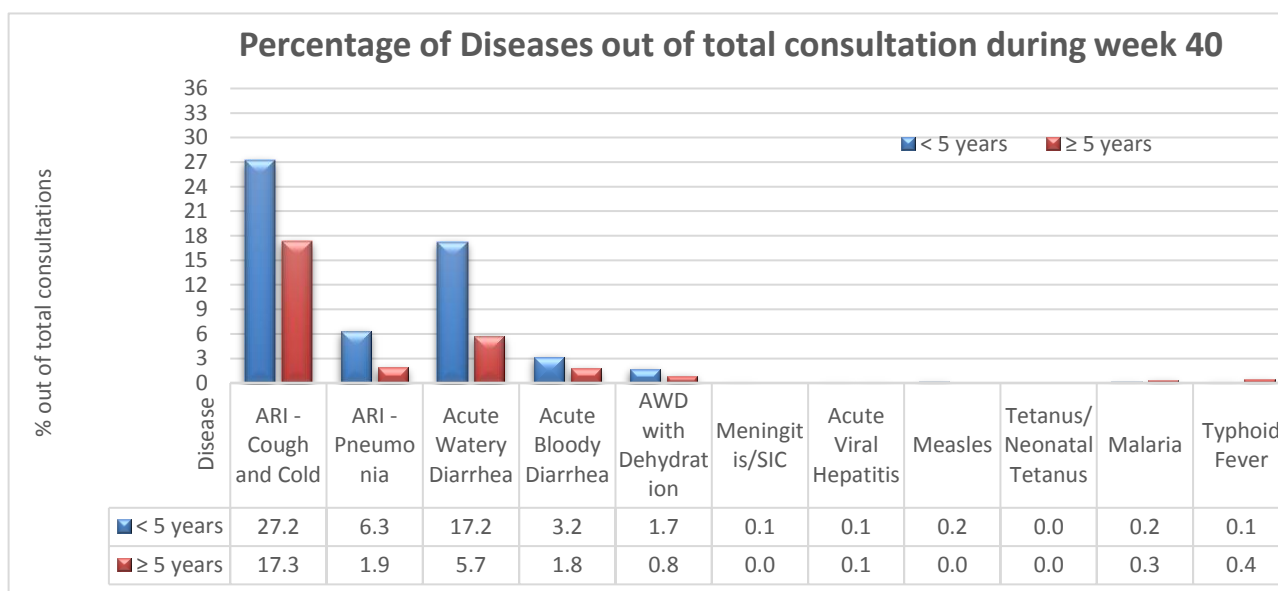


**Table 1: Coverage of NDSR Surveillance System**

Type of Health Facility	RH/PH	DH	CHC/BHC	Special Hospital	Other	Total
Total Health Facilities (HF)	37	88	1,315	32	1171	2,643
HF covered by NDSR-Plus	32	77	389	12	3	513

**Indicator - based Surveillance (IBS):**

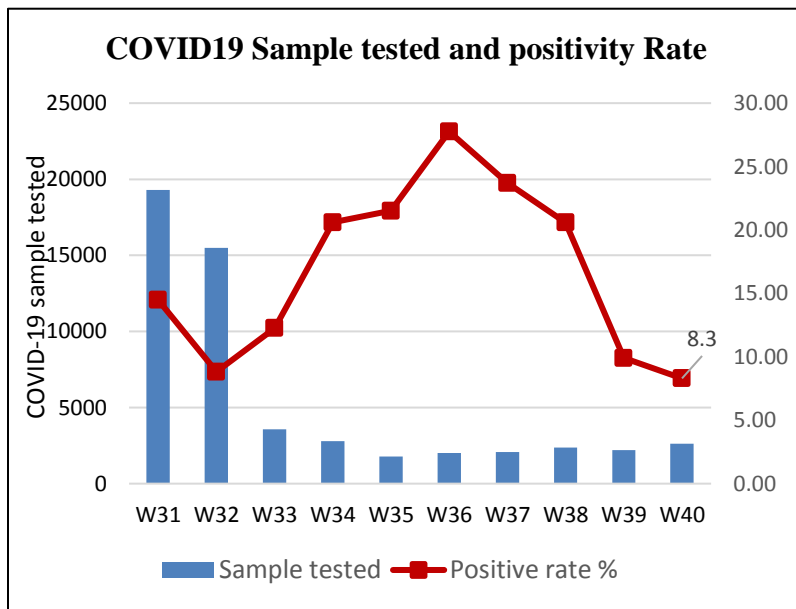
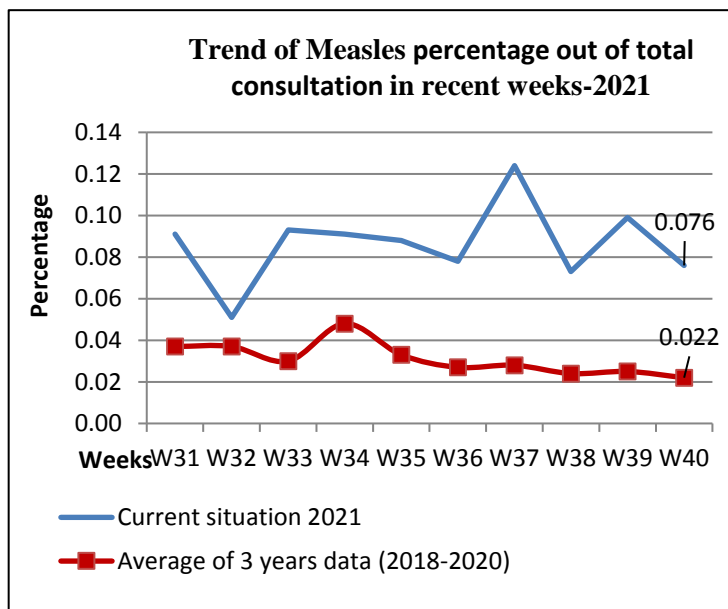
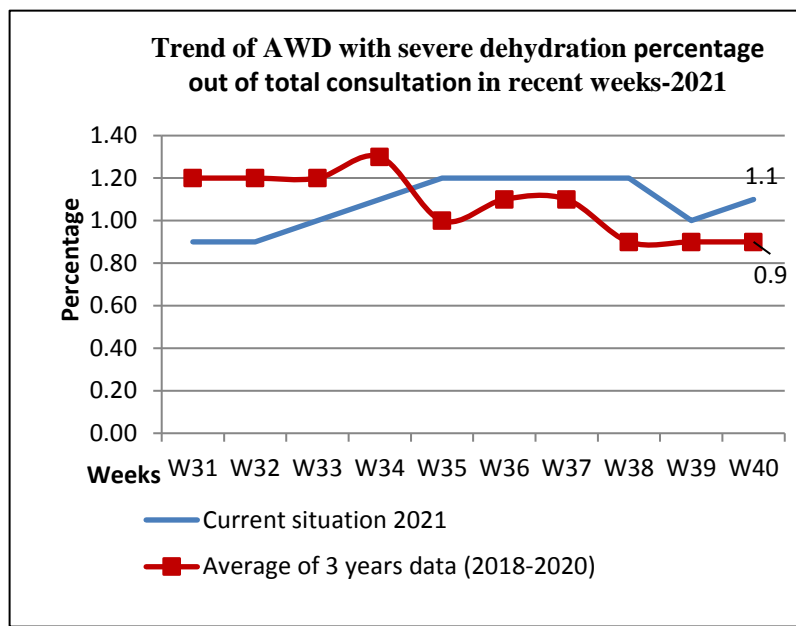
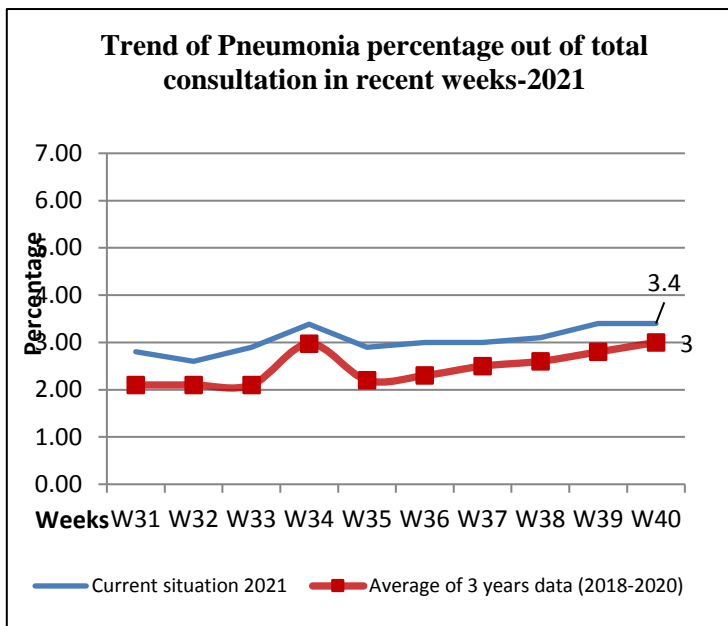
The Indicator-based surveillance component of NDSR report 17 priority conditions/infectious diseases from sentinel sites on weekly bases. The data is compared with previous weeks and the corresponding weeks of previous years and the alert and epidemic threshold is checked to see if disease incidence has crossed these levels and necessary action is initiated.



**Table 2: Cases and deaths due to VPDs by age group during week 40<sup>th</sup>, 2021**

Diseases	Cases			Deaths			CFR/100
	<5 years	≥ 5 years	Total	<5 years	≥ 5 years	Total	
Suspected Measles	222	77	299	2	0	2	0.67

**Seasonal Diseases:**

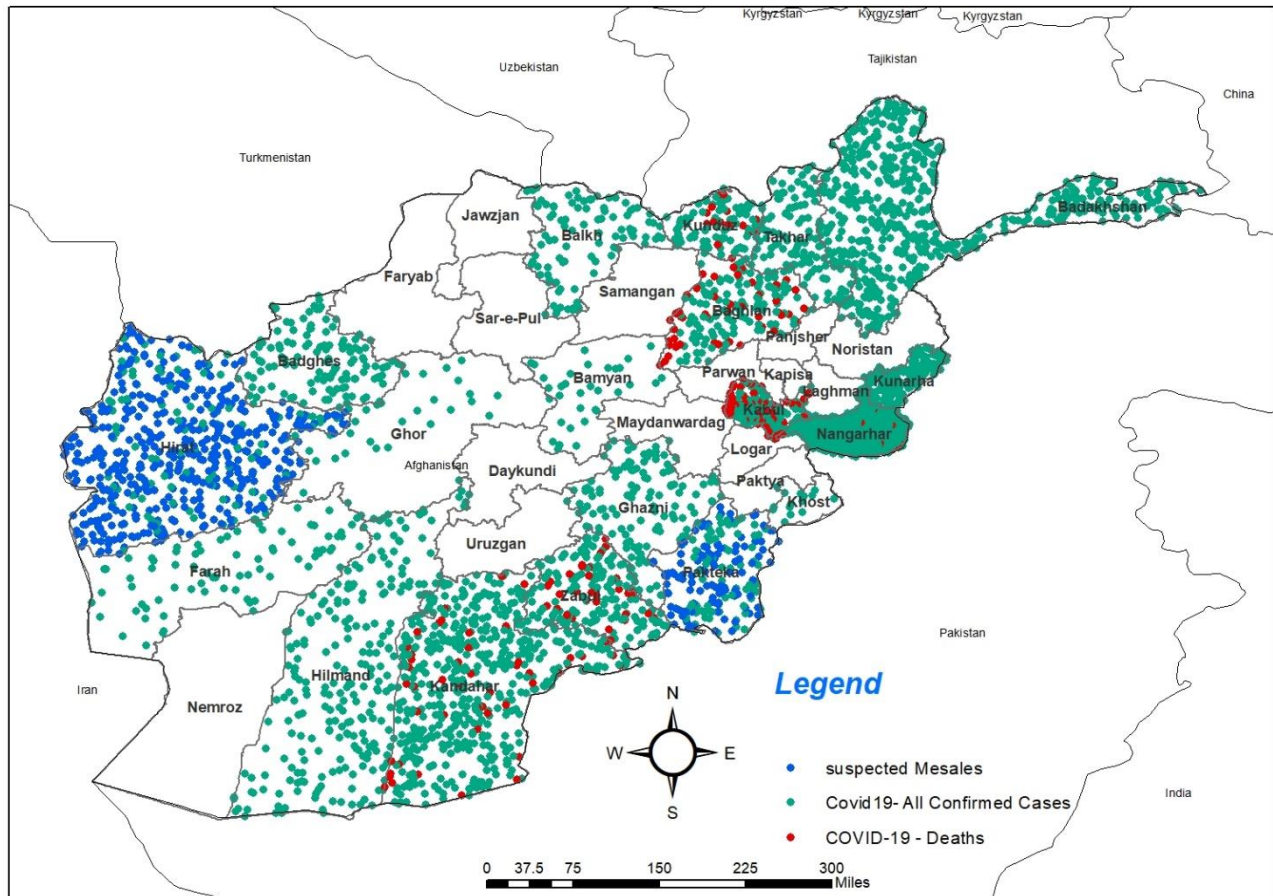


AWD Outbreak								
Reported Date	Province	District	Village	<5 Cases	≥5 Cases	Total Cases	Total Deaths	Recommendation /Action take
03/10/2021	Kabul	Kabul districts	Kabul	43	544	587	02	In this week, 587 AWD hospitalized new cases epi-linked with the last month Kabul province AWD outbreak reported, investigation is going on, active/daily surveillance is started, case management was done for all the cases. RDT sampling was done and lab samples for culture were collected and shipped to CPHL. Health education was conducted by the investigation team.

Dengue fever cases								
Reported dated	Province	District	Village	<5 Cases	≥5 Cases	Total Cases	Total Deaths	Recommendation/Action take
03/10/2021	Nangarhar	Mohmandara, Dor baba	Mohmandara Turkham and Guloko	1	136	137		During this week, 137 Dengue fever new suspected cases epi-linked with Nangarhar province Dengue fever outbreak reported, Coordination and communication was done with all stakeholders at the local, provincial and national levels, 27 blood serum specimens have been collected and shipped to CPHL for confirmation, among them 15 were positive for Dengue fever.

Suspected Measles Outbreaks									
Reported Date	Province	District	Village	<5 Cases	≥5 Cases	Total Cases	Total Deaths	coverage %	Recommendation /Action take
05/10/2021	Paktika	Della	Mamorkhil	6	1	7	0	14%	In this week, 02 suspected Measles outbreaks were reported from Paktika and Herat provinces, the outbreaks were investigated, case management was done for all the cases. Health education regarding these outbreaks were delivered by the investigation teams.
07/10/2021	Herat	Gulran	Qashlaq jan	18	11	29	0	20%	

**Figure 2: COVID-19 cases and Measles outbreaks during the week 40<sup>th</sup> 2021**



**Table 3: Updates on the outbreaks reported during 2021 (27 Dec 2020 to 09, October 2021)**

Disease/Event	Count of Disease/Event	Sum of Lab Confirm	Sum of total Cases	Sum of Total Deaths
Measles	94	62	1028	35
CCHF	79	21	79	5
Dog bites/Suspected Rabies	10	0	61	0
Pertussis	4	0	38	0
Scabies	3	0	71	0
Diphtheria	3	0	6	1
Acute Watery Diarrhea	2	2	1329	8
Food poisoning	2	0	26	0
COVID 19	1	1	103488	5054
Tick bite	1	0	9	0
Mass psychogenic Illness	1	0	16	0
ARI	1	0	11	0
Unknown Poisoning	1	0	12	3
Acute Influenza	1	1	5	0
Chickenpox	1	0	9	0
Gas (CO) Poisoning	1	0	18	0
Dengue fever	1	1	189	0
<b>Grand Total</b>	<b>206</b>	<b>88</b>	<b>106395</b>	<b>5106</b>

### Laboratory surveillance:

A total of **2,645** specimens were collected and shipped to CPHL, regional and private labs. Out of which **217** specimens were confirmed for COVID-19 and 15 specimens were confirmed for Dengue fever in this week. (Follow up by the CPHL is going on).

### Influenza Surveillance activities:

In Epidemiological week 40<sup>th</sup> 2021, we have received Epidemiological reports from 9 out of 9 sentinel sites. (Kabul, Kapisa, Balkh, Herat, Kandahar, Bamyan, Baghlan, Nangarhar, and Paktya). Out of all new hospital admissions, 144 (5.1%) Severe Acute Respiratory Infections cases were reported and 61% were under 5 years old. The proportion of SARI cases were slightly decreased as compared to week 39<sup>th</sup> 2021. Three SARI associated deaths were reported this week. At the 9 provincial levels, the top sentinel sites with the highest proportion of SARI cases were Bamyan(20%), Kapisa (18%) and Kabul (10%). In this epidemiological week, our field staff shipped 34 SARI and 23 ILI specimens to the National Influenza Center (NIC).

### COVID-19 Surveillance activities:

In this week, **2,626** specimens were tested for suspected COVID-19. Out of which **217** samples were confirmed for COVID-19 by rtPCR. The cases have been managed either in the isolation wards or in home quarantine.

- COVID-19 cases were almost the same as compared to last week (and 1.7 % lab samples positivity rate decreased as compared to last week at national level).
- Bed occupancy rate (BOR) at the national level is 28.9%, which increased 6% compared to last week.
- Out of 462 contacts of 124 confirmed cases that were mostly family members with an average of 04 Contacts per one case, and will be continued until 14 days of their last contact with the confirmed cases. Also, surveillance screening teams screened all the passengers in the points of entry for fever, and health education was conducted for them, about **41,927** passengers have been screened for COVID-19 in the points of entry of five provinces (Herat, Kandahar, Kunduz, Nangarhar and Nimroz provinces).

### Challenges:

- Shortage of lab consumables in majority of the provinces for suspected COVID-19 and suspected cholera cases.
- COVID-19 cases lab samples positivity rate increased in east region especially in Nangarhar province
- Rapid Response Teams (RRTs) are not functional in majority of the provinces.
- AWD hospitalized cases, Dengue fever cases and Measles cases are in the increasing trend compared to last two years.

### Recommendations:

- Regular supply for lab consumables and kits for surveillance priority diseases including COVID-19 are needed and lab testing capacity needs to be strengthened and expanded to all the provinces.
- RRTs should be functional again, to support the outbreak investigation and response for COVID-19, AWD, Measles and dengue fever outbreaks and other health emergencies, (At least one RRT in each province should keep functional).
- Emergency supply and buffer stock is needed for all the provinces in the outbreak prone areas
- COVID-19 lab samples should be collected from all the provinces.
- **EPI:** As the system detected **335** suspected Measles cases and **02** deaths due to measles, further prevention and control measures should be conducted by the EPI team.
- The findings should be analyzed further in different levels and appropriate actions to be taken by the concerned departments.