

National Disease Surveillance & Response (NDSR)

NDSR Weekly Epidemiological Report 35th

Date: 28/08/ - 03/09/ 2022

Summary:

- Out of 519 functional Surveillance sentinel sites, 506 (97.5%) have submitted reports this week.
- A total of 534,848 new consultations, 213,664 (39.9%) were due to Surveillance targeted diseases. That included 113,140 males (53%) and 100,524 females (47%). Also, 101,582 (47.5%) under five years old and 112,082 (52.5%) five years old and over, reported this week.
- The main causes of consultations this week were ARI Cough & Cold, 105,735 cases (19.8%) out of total new consultations, Acute Diarrheal Diseases 82,538 cases (15.4%) out of total new consultations, and Pneumonia, 17,312 cases (3.2%) out of total new consultations.
- A total of 190 deaths were reported this week, of which 33 deaths (17.4%) were due to Surveillance targeted diseases deaths, which include 16 Pneumonia deaths, 05 COVID-19 Deaths, 05 Acute Watery Diarrhea (AWD) with Dehydration deaths, 03 Acute Bloody Diarrhea deaths, 03 Suspected Measles deaths and 01 Suspected Meningitis/ Severely Ill Child death.
- In addition, during this week **12** outbreaks reported (**08 suspected CCHF** Outbreaks were reported from Herat, Kabul, Jawzjan and Balkh provinces, **02 AWD** outbreaks were reported from Badghis and Nangarhar Provinces, **01 suspected Rabies outbreak** was reported from Kapisa province and 01 clinical Mumps outbreak reported from **Kabul** province).
- Moreover, 1626 COVID-19 confirmed cases and 549 suspected Measles cases were reported at the national level.

Figure1: Surveillance/NDSR Sentinel Sites with GPS location by type of Health Facility, 2022

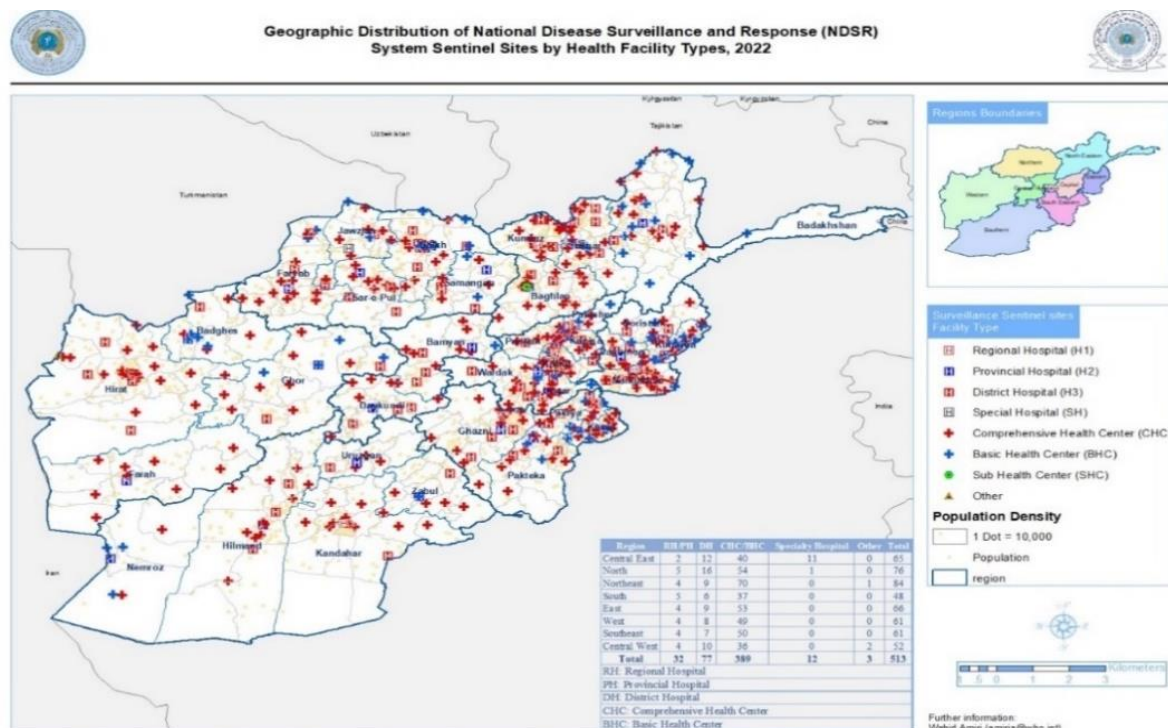


Table 1: Coverage of NDSR Surveillance System

Type of Health Facility	RH	PH	DH	CHC	BHC	NH/ Special Hospital	SHC	Other	Total
Total Health Facilities (HF)	8	27	91	437	900	36	1,106	2,093	4,698
HF covered by NDSR-Plus	6	25	80	310	80	13	1	4	519

Indicator - based Surveillance (IBS):

The indicator-based surveillance component of NDSR, report 17 priority conditions/infectious diseases from sentinel sites on weekly bases. The data is compared with previous weeks and the corresponding weeks of previous years and the alert and epidemic threshold is checked to see if disease incidence has crossed these levels and necessary action is initiated.

Figure 2: A

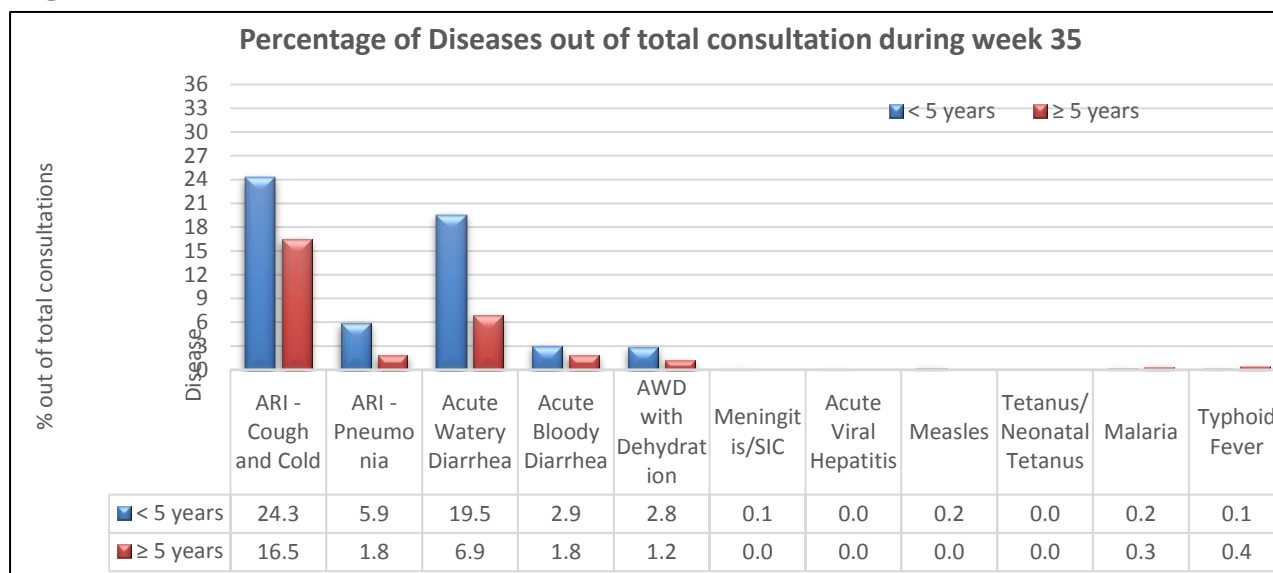


Figure 2: B

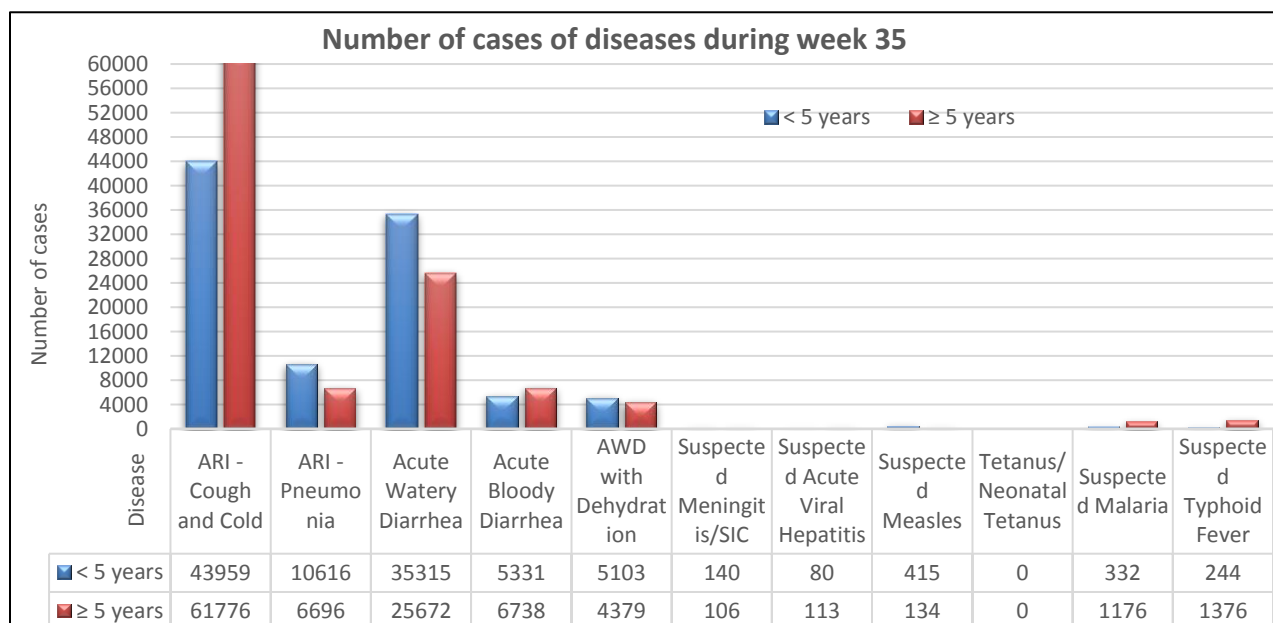


Table 2: Cases and deaths due to VPDs by age group during week 35th, 2022

Diseases	Cases			Deaths			CFR/100
	<5 years	≥ 5 years	Total	<5 years	≥ 5 years	Total	
Suspected Measles	415	134	549	3	0	3	0.55

Seasonal Diseases:

Figure 3: A

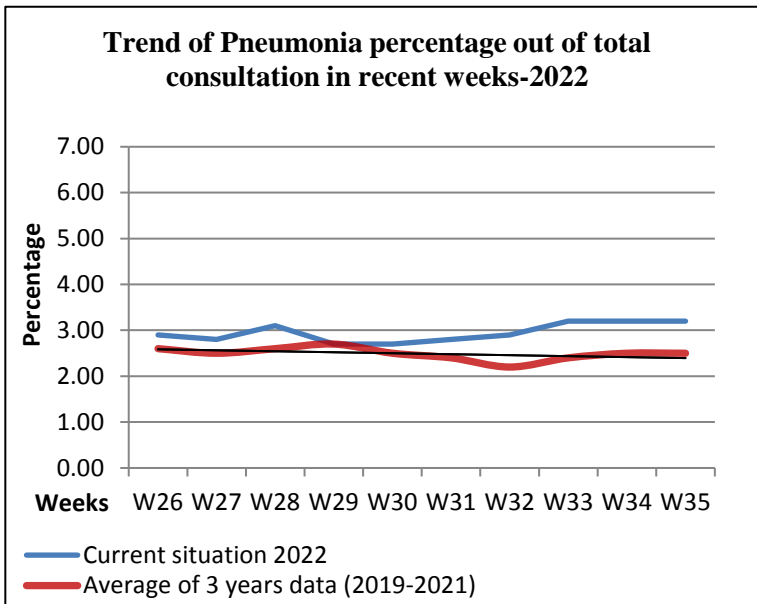


Figure 3: B

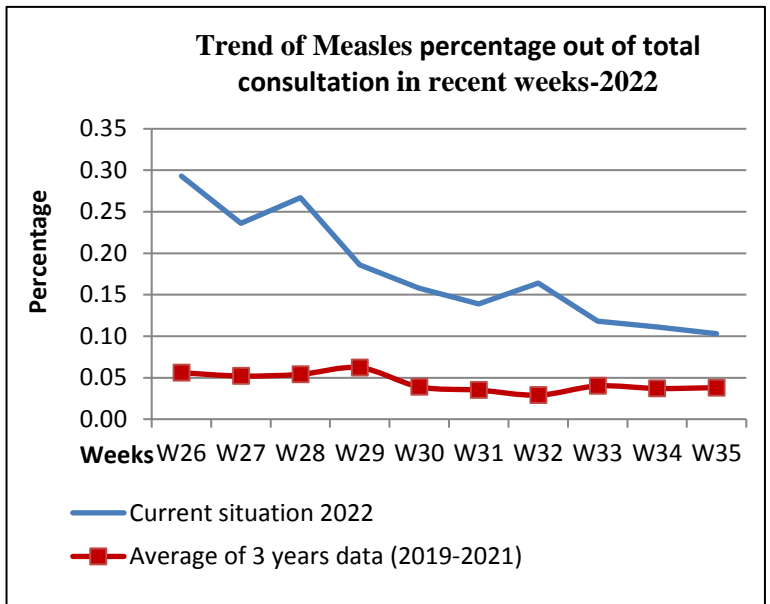


Figure 3: C

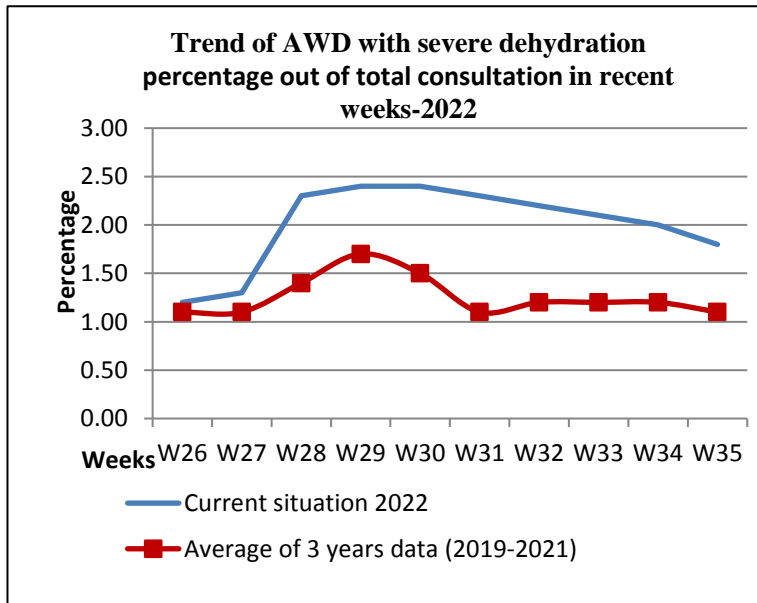


Figure 3: D

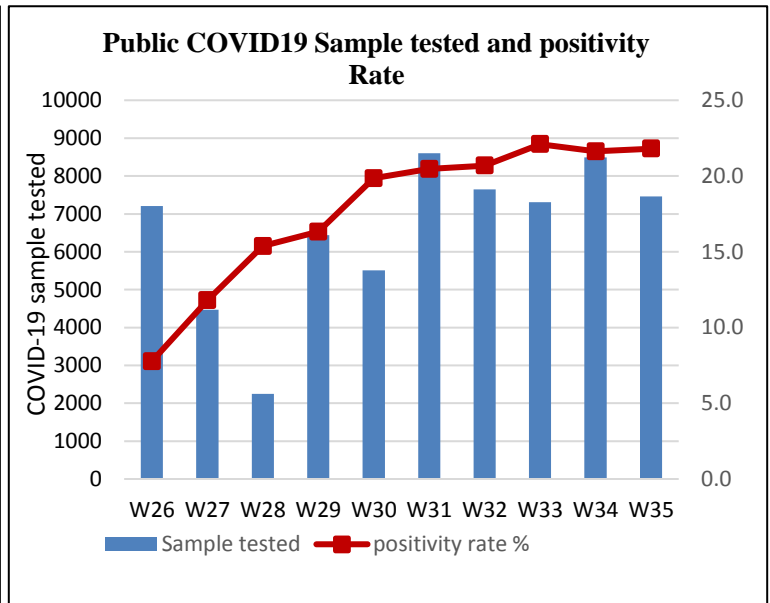


Table 3: Outbreaks in week 35th:

Suspected CCHF Cases (Herat, Kabul, Jawzjan and Balkh) provinces								
Reported date	Province	District	Village	Total cases	Total deaths	Age	Occupation	Recommendation /Action taken
28/08/2022	Herat	Herat	Herat	1	0	23Y	Housewife	During this week 08 suspected CCHF cases were reported from Herat, Kabul, Balkh and Jawzjan provinces. Case management was done for all the cases, health education sessions were conducted and the information was shared with related departments and animal health as well, to take preventive and control measures.
28/08/2022		City	pole rangina	1	0	53Y	Other	
28/08/2022		Injil	Taibarian	1	0	45Y	Butcher	
28/08/2022		City	Shalbafan	1	0	15Y	Other	
28/08/2022		Farah rod	Sar chashma	1	0	25Y	Shepherd	
28/08/2022	Kabul	District 12	Arzan Qemat	1	0	16Y	Butcher	
28/08/2022	Jawzjan	Aqcha	Faizabad	1	0	19Y	Other	
28/08/2022	Balkh	Balkh district	Palas Posh	1	0	20Y	Other	

AWD outbreaks from (Badghis and Nangarhar) Provinces						
Reported date	Province	District	Village	Total cases	Total deaths	Recommendation/ Action take
28/08/2022	Badghis	Bala murghab	Boz bay	10	1	During this week 02 AWD outbreaks were reported from Badghis and Nangarhar Provinces. Case management was done, and health education sessions were conducted for all the cases. More updates will be shared through follow-up and final investigation reports.
28/08/2022	Nangarhar	Behsood	Daman	12	1	

Dog bite/suspected Rabie Outbreaks from (Kapisa) province

Reported dated	Province	District	Village	Total cases	Total deaths	Recommendation/Action take
28/08/2022	Kapisa	Kohistan-1	Shirkhankhil	13	0	During this week 01 dog bite /suspected Rabies outbreak was reported from Kapisa province. Case management was done, health education sessions were conducted for all the cases.

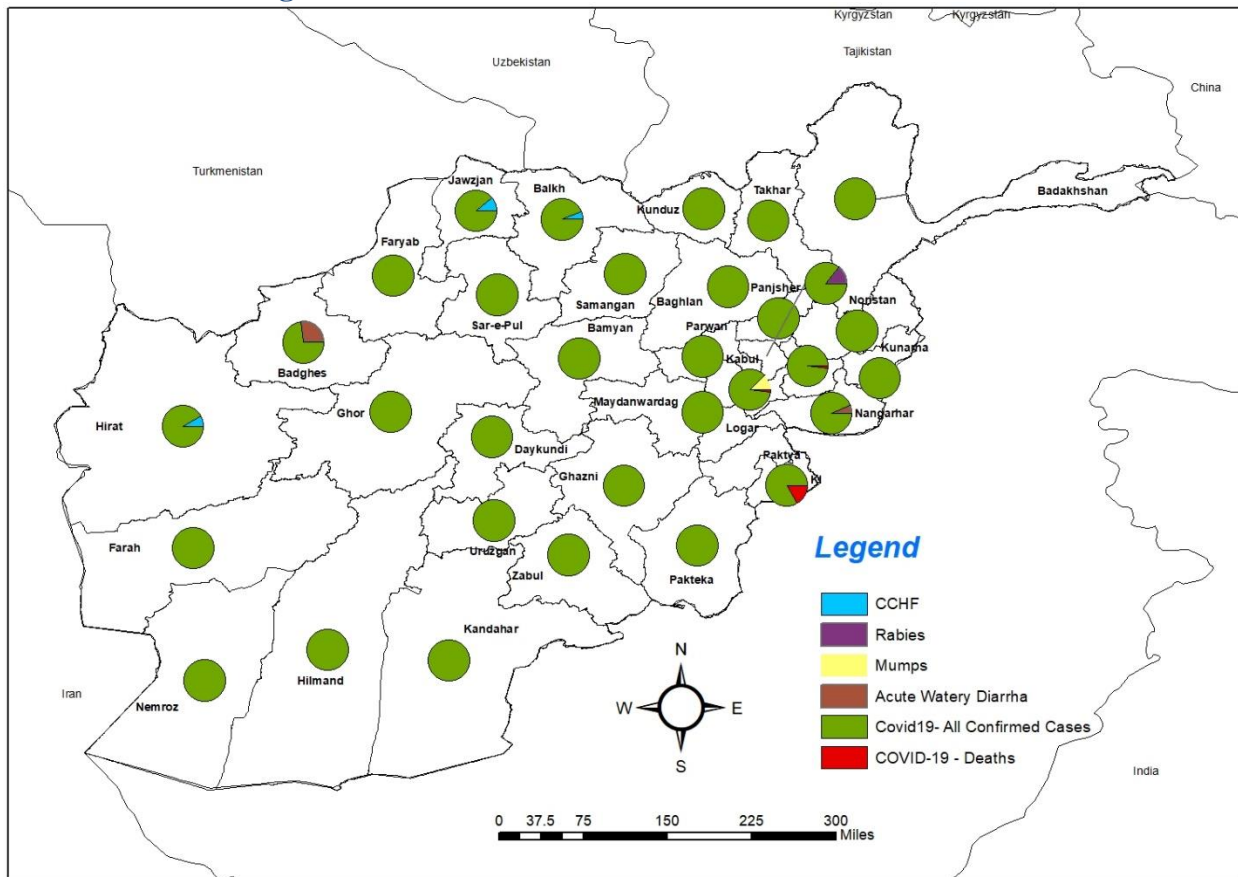
Clinical Mumps Outbreak from (Kabul) province

Reported dated	Province	District	Village	Total cases	Total deaths	Recommendation/Action take
28/08/2022	Kabul	District 2	Dah Afghanan	13	0	During this week 01 clinical Mumps outbreak was reported from Kabul province. Case management was done, health education sessions were conducted for all the cases.

Table 4: Updated outbreaks report during 2022 (26 Dec 2021 to 09 September 2022)

Disease/Event	Count of Disease/Event	Sum of Lab Confirm	Sum of total Cases	Sum of Total Deaths
Measles	242	170	3469	108
CCHF	315	82	316	11
Dog bites/Suspected Rabies	15	1	97	0
Pertussis	29	1	170	10
Acute Watery Diarrhea	57	12	3391	5
Food Poisoning	12	0	314	2
Unknown Poisoning	1	0	5	2
Scabies	7	0	112	0
Chickenpox	24	1	242	0
Leishmaniosis	3	0	67	0
Cat bite suspected rabies	1	0	4	0
Mumps	2	0	22	0
Diphtheria	1	0	1	0
Pneumonia	1	0	25	0
Dengue fever	1	0	4	0
Skin disease	1	0	3	0
Anthrax	1	0	5	0
COVID-19	1	1	39192	495
Malaria	3	3	1282	0
Grand Total	717	271	48721	633

Figure 4: Distributions of COVID-19, CCHF, Acute Watery Diarrhea, Rabies and Mumps cases and deaths during the week 35th



Laboratory surveillance:

A total of **9431** specimens were collected and shipped to CPHL and other regional laboratories. Out of which **1626** specimens were confirmed for COVID-19, 30 specimens were confirmed for Malaria, 18 specimens were confirmed for Acute Watery Diarrhea, 13 specimens were Confirmed for Chickenpox, 03 specimens were confirmed for Brucellosis, 17 Measles specimens were confirmed (Follow-up by the CPHL is going on).

Influenza Surveillance activities:

In Epidemiological week 35th 2022, we have received Epidemiological reports from 09 out of 09 sentinel sites. (Kabul, Kandahar, Balkh, Herat, Bamyan, Baghlan, Nangarhar, Kapisa and Paktia). Out of all new hospital admissions, 187 (5.1%) Severe Acute Respiratory Infections cases were reported and 76% were under 5 years old. The proportion of SARI cases was slightly increased (0.4%) compared to week 34th 2022. 05 SARI-associated deaths were reported this week. At the 09 provincial levels, the top sentinel sites with the highest proportion of SARI cases were Kapisa (24.6%), Kabul (14%), and Bamyan (10.9%) provinces. During this Epi-week, our field staff shipped 24 SARI and 16 ILI specimens to the National Influenza Center (NIC).

COVID-19 Surveillance activities:

In this week, **8406** specimens were tested for suspected COVID-19. Out of which **1626** specimens were confirmed for COVID-19 by RT-PCR.

- COVID-19 cases positivity rate was 19.3% in this week, the same as previous week.
- Bed occupancy rate (BOR) at the national level was **59.2%**, which decreased 1.8 % compared to last week.
- Out of **4337** contacts of **1241** confirmed cases were traced that were mostly family members with an average of 3 contacts per one case, and will be continued until 14 days of their last contact with the confirmed cases. Also, surveillance screening teams screened all the passengers in the points of entry for fever. In addition, health education was conducted for them, about **35053** passengers have been screened for COVID-19 in the points of entry of five provinces (Balkh, Nangarhar, Hirat, Kandahar and Nimroz).

Challenges:

- COVID-19 cases average positivity rate at national level was 19.3%, which is the same as previous week and 05 deaths due to COVID-19 were reported.
- AWD outbreaks and Diarrheal diseases cases were slightly decreased (1.6%) compared to previous week, although we had 02 AWD outbreaks with 05 AWD with Dehydration deaths in this week.
- Suspected Measles cases and outbreaks are still a public health challenge, as in this week **549** suspected measles cases with 03 suspected measles deaths were reported.

Recommendations:

- COVID-19 response national committees are requested to strengthen the main response functions such as (surveillance, case management, preventive measures and health promotion).
- Strong preventive efforts and control measures are needed for the control of AWD cases at the national level.
- Measles response strategy should be revised, moreover the routine vaccination coverage should also be improved.
 - **EPI:** As the surveillance system detected **549** suspected Measles cases with 03 suspected measles deaths, so further prevention and control measures should be conducted by the EPI team.
- The findings should be analyzed further in different levels and appropriate actions to be taken by the concerned departments.