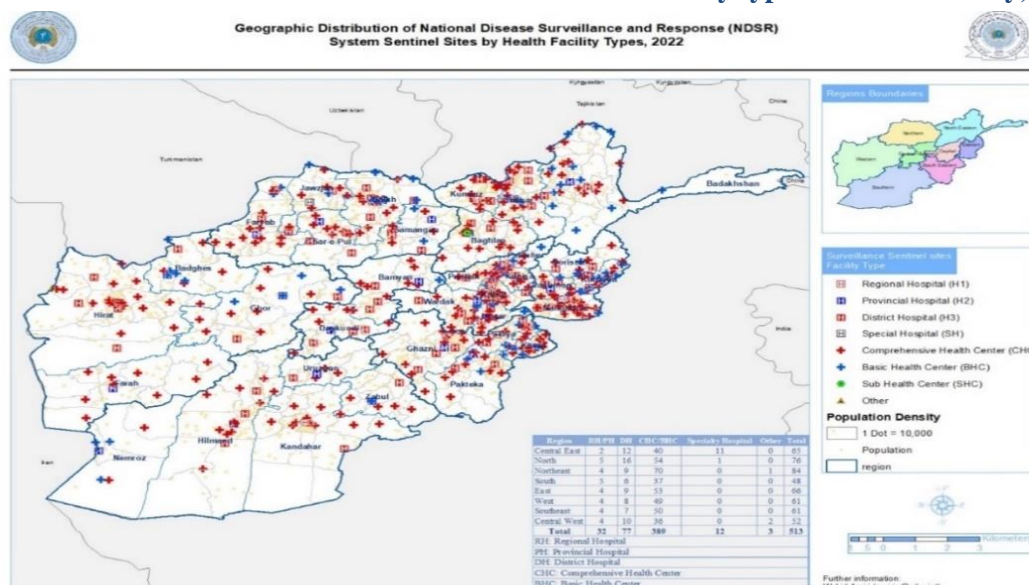


Summary:

- Out of **613** functional Surveillance sentinel sites, **539 (87.9 %)** have submitted reports this week.
- A total of **549,677** new consultations, **209,120 (38%)** were due to Surveillance targeted diseases. That included **110,583 (52.9%)** males and **98,537 (47.1%)** females. Also, **101,247 (48.4%)** under five years old and **107,873 (51.6%)** five years old and over, reported this week.
- The main causes of consultations in this week were ARI Cough & Cold, **124250 (22.6%)** cases out of total new consultations, Acute Diarrheal Diseases **55096 (10%)** cases out of total new consultations, and Pneumonia **23705 (4.3%)** cases out of total new consultations.
- A total of **215** deaths were reported this week, of which **65 (30.2%)** deaths were due to Surveillance targeted diseases, which include **44** Pneumonia deaths, **03** COVID-19 deaths, **05** Suspected Meningitis/ Severely Ill Child deaths, **05** Acute Watery Diarrhea (AWD) with Dehydration deaths, **04** Suspected Typhoid Fever deaths, **03** Suspected Acute Viral Hepatitis deaths, and **01** Pregnancy-related death.
- In addition, during this week **24 outbreaks** were reported (**06 Dengue Fever** outbreaks were reported from Laghman, Nangarhar and Logar Provinces, **06 Suspected Measles** outbreak were reported from Helmand, Herat, Nimroz, Pakya and Wardak provinces, **03 Suspected CCHF** outbreaks were reported from Kabul, Ghazni and Herat provinces, **03 AWD** outbreak were reported from Helmand and Urozgan Provinces, **02 Suspected Chickenpox** outbreaks were reported from Urozgan and Wardak Provinces, **02 Suspected Acute Viral Hepatitis** outbreaks were reported from Kabul and Ghazni Provinces, **01 Food Poisoning** outbreak was reported from Nimroz Province and **01 Dog bite/suspected Rabies** outbreak was reported from Badakhshan Province.
- Moreover, **844** COVID-19 confirmed cases and **568** suspected Measles cases and 01 death due to measles reported at the national level.

Figure1: Surveillance/NDSR Sentinel Sites with GPS location by type of Health Facility, 2022



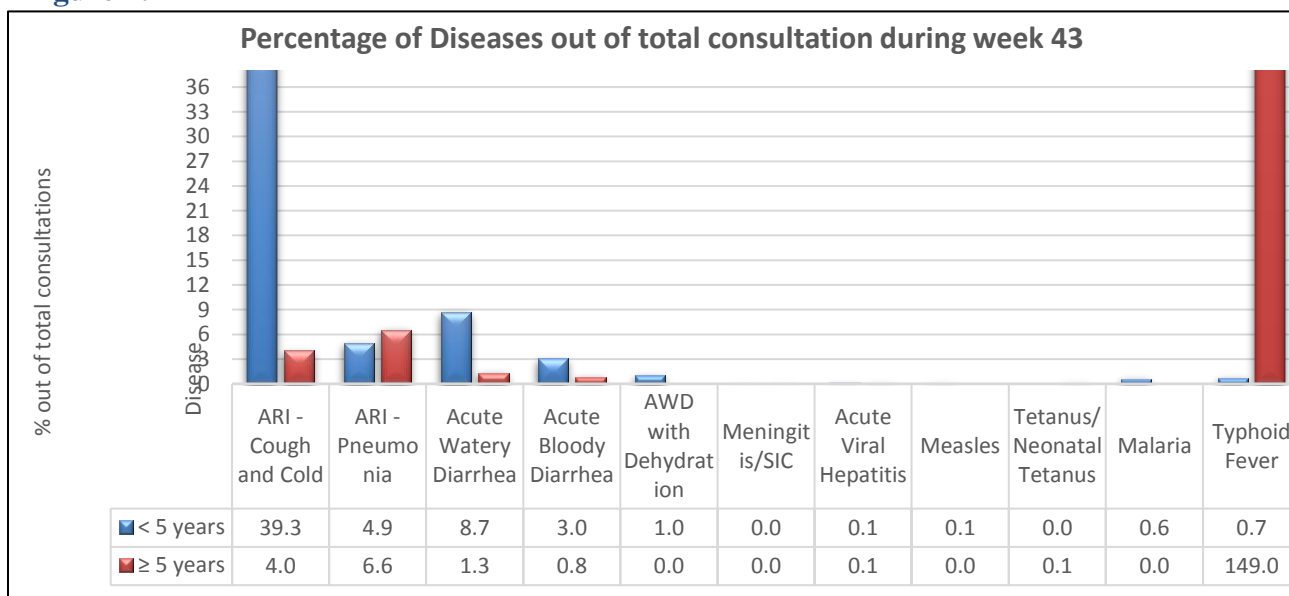
**Table 1: Coverage of NDSR Surveillance System**

| Type of Health Facility             | RH | PH | DH | CHC | BHC | NH/ Special Hospital | SHC   | Other | Total |
|-------------------------------------|----|----|----|-----|-----|----------------------|-------|-------|-------|
| <b>Total Health Facilities (HF)</b> | 8  | 27 | 91 | 437 | 900 | 36                   | 1,106 | 2,093 | 4,698 |
| <b>HF covered by NDSR-Plus</b>      | 8  | 26 | 90 | 348 | 111 | 17                   | 10    | 3     | 613   |

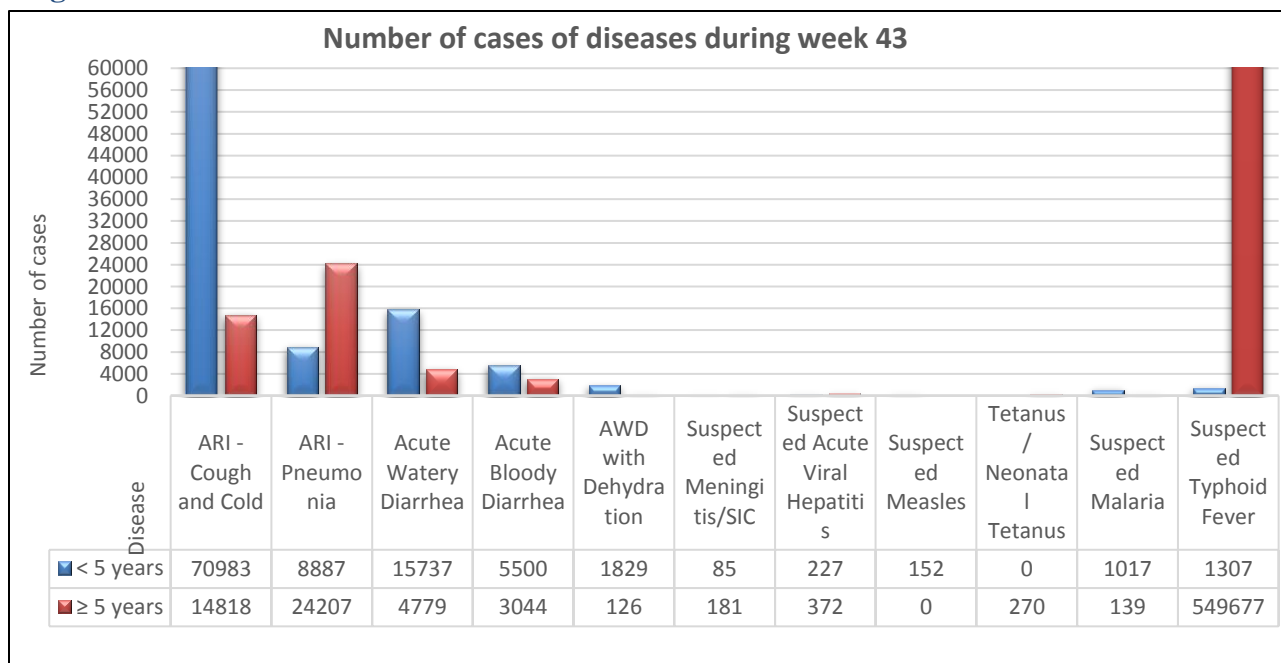
**Indicator - based Surveillance (IBS):**

The indicator-based surveillance component of NDSR, report 17 priority conditions/infectious diseases from sentinel sites on weekly bases. The data is compared with previous weeks and the corresponding weeks of previous years and the alert and epidemic threshold is checked to see if disease incidence has crossed these levels and necessary action is initiated.

**Figure 2: A**



**Figure 2: B**

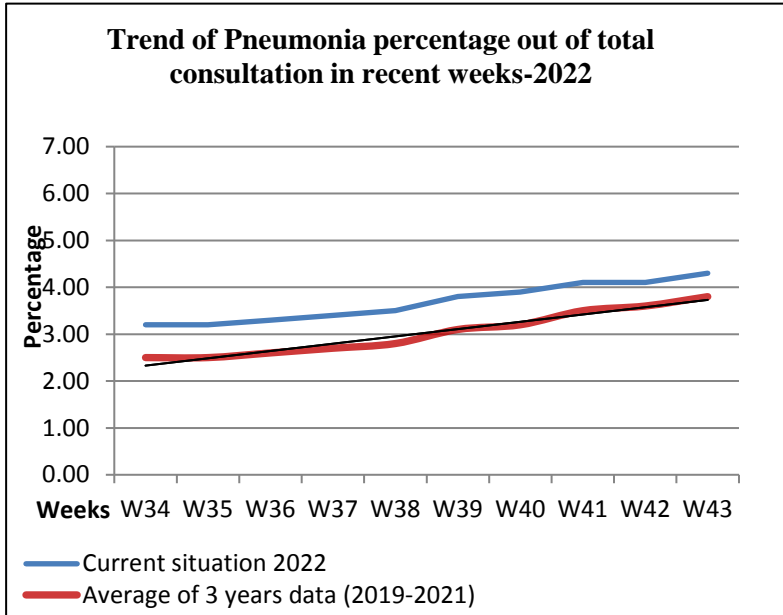


**Table 2: Cases and deaths due to VPDs by age group during week 43<sup>rd</sup> 2022**

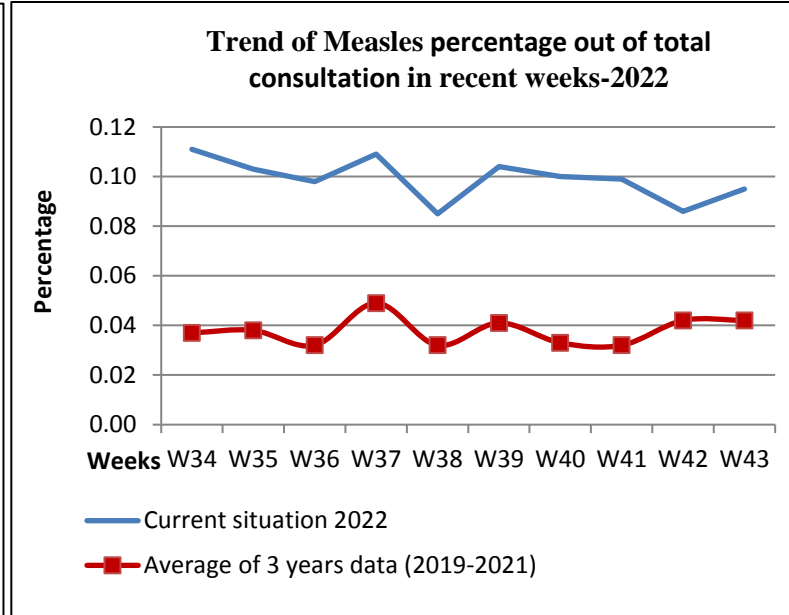
| Diseases          | Cases    |           |       | Deaths   |           |       | CFR/100 |
|-------------------|----------|-----------|-------|----------|-----------|-------|---------|
|                   | <5 years | ≥ 5 years | Total | <5 years | ≥ 5 years | Total |         |
| Suspected Measles | 152      | 372       | 524   | 0        | 0         | 0     | 0.00    |

**Seasonal Diseases:**

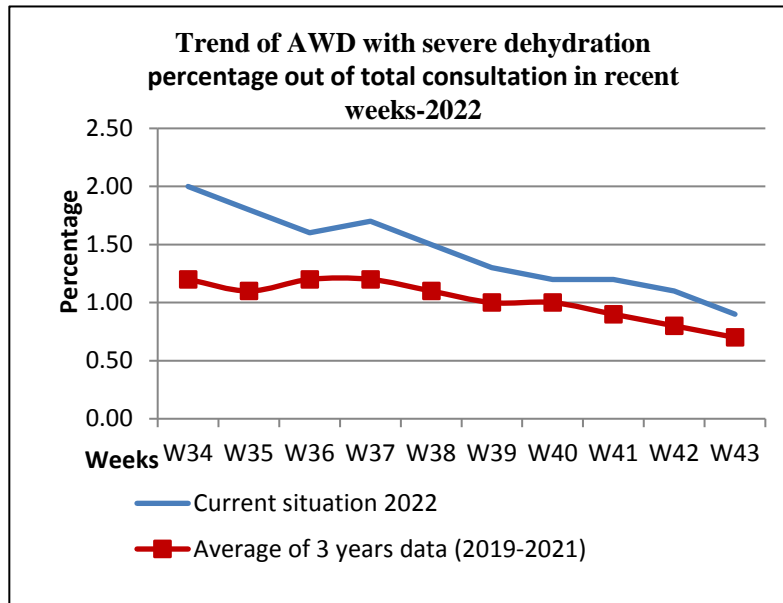
**Figure 3: A**



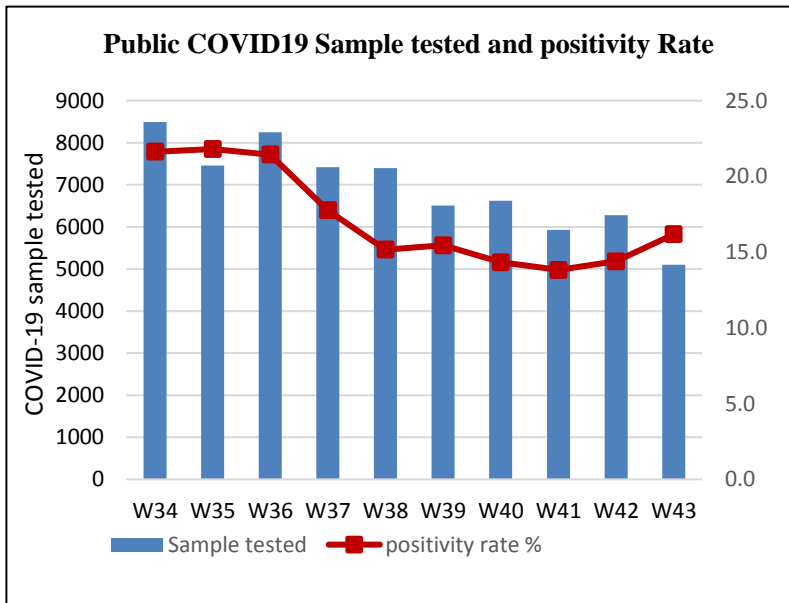
**Figure 3: B**



**Figure 3: C**



**Figure 3: D**



**Table 3: Outbreaks in week 43<sup>rd</sup> 2022:**

| Suspected CCHF Cases (Kabul, Ghazni and Herat) provinces                          |          |             |                    |             |              |             |            |  |          |   |
|---|----------|-------------|--------------------|-------------|--------------|-------------|------------|--|----------|---|
| Reported date   | Province | District    | Village            | Total cases | Total deaths | Age         | Occupation | Recommendation/Action taken  |          |   |
| 24/10/2022  | Kabul    | Surobi      | Uzben              | 1           | 0            | 26Y         | Other      | During this week <b>03</b> suspected CCHF cases were reported from <b>Kabul, Ghazni and Herat</b> provinces.<br>Case management was done for all the cases, health education sessions were conducted and the information was shared with related departments and animal health as well, to take preventive and control measures. |          |   |
| 27/10/2022  | Ghazni   | Qarah Bagh  | Qarah Bagh         | 1           | 0            | 15Y         | House wife |  |          |   |
| 26/10/2022  | Herat    | City        | Area 8             | 1           | 0            | 70Y         | Other      |  |          |   |
| Suspected Measles outbreaks (Helmand, Herat, Nimroz, Paktya and Wardak) provinces |          |             |                    |             |              |             |            |  |          |   |
| Reported date   | Province | District    | Village            | <5 cases    | ≥5 cases     | Total cases | Deaths     | Vaccination coverage   |          | Recommendation/Action taken   |
|   |          |             |                    |             |              |             |            | Reported   | Assessed |   |
| 23/10/2022  | Helmand  | Nahre Saraj | Mahjir Bazar       | 5           | 3            | 8           | 0          | 71%  | 30%      | In this week, <b>06</b> suspected Measles outbreaks were reported from <b>Helmand, Herat, Nimroz, Paktya and Wardak</b> provinces.<br>The outbreaks were investigated, case management was done for all the cases. Also, health education session was conducted.<br>Vaccination of children in the surrounding villages of the affected area is going on. |
| 29/10/2022  | Herat    | Farsi       | Gargi              | 1           | 4            | 5           | 1          | 90%  | 80%      |   |
| 26/10/2022  | Nimroz   | Kang        | Shah Jan           | 2           | 4            | 6           | 0          | 89%  | 78%      |   |
| 23/10/2022  | Paktya   | Gardasari   | Sorokhil Gardasrai | 5           | 8            | 13          | 0          | N/A  | N/A      |   |
| 25/10/2022  |          | Gardasari   | Sorokhil Gardasrai | 4           | 3            | 7           | 0          | N/A  | N/A      |   |
| 23/10/2022  | Wardak   | Dimerdad    | Tangi Saydan       | 5           | 5            | 10          | 0          | 56   | N/A      |   |

**AWD outbreak from (Helmand and Urozgan) provinces**

| Reported dated | Province | District | Village       | Total cases | Total deaths | Recommendation/Action take  |
|----------------|----------|----------|---------------|-------------|--------------|---|
| 23/10/2022     | Helmand  | Baghran  | Sarbaghani    | 47          | 0            | During this week <b>03</b> AWD outbreaks were reported from <b>Helmand and Urozgan</b> provinces, case management was done. Health education sessions were conducted for all the cases. |
| 23/10/2022     |          | Nawa     | Godar & Barna | 340         | 0            |   |
| 23/10/2022     | Urozgan  | Chinarto | Agha Jan      | 80          | 0            |   |

**Suspected chickenpox outbreak from (Urozgan and Wardak) provinces**

| Reported dated | Province | District | Village                   | Total cases | Total deaths | Recommendation/Action take  |
|----------------|----------|----------|---------------------------|-------------|--------------|---|
| 25/10/2022     | Urozgan  | Terinkot | Ghulam Sediq Khan Village | 5           | 0            | During this week <b>02</b> suspected chickenpox outbreaks were reported from <b>Urozgan and Wardak</b> provinces, case management was done. Health education sessions were conducted for all the cases. |
| 23/10/2022     | Wardak   | Dimerdad | Fakar Village             | 12          | 0            |   |

**Suspected Acute Viral Hepatitis outbreak from (Kabul) province**

| Reported dated | Province | District    | Village  | Total cases | Total deaths | Recommendation/Action take   |
|----------------|----------|-------------|----------|-------------|--------------|--|
| 25/10/2022     | Kabul    | District 12 | Block 4  | 4           | 0            | During this week <b>02</b> suspected AVH outbreaks were reported from <b>Kabul and Ghazni</b> provinces, case management was done. Health education sessions were conducted for all the cases. |
| 25/10/2022     | Ghazni   | Center      | Espandee | 7           | 0            |  |

**Food Poisoning outbreak from (Nimroz) province**

| Reported dated | Province | District | Village | Total cases | Total deaths | Recommendation/Action take   |
|----------------|----------|----------|---------|-------------|--------------|--|
| 24/10/2022     | Nimroz   | Zaranj   | City    | 6           | 0            | During this week <b>01</b> Food Poisoning outbreak was reported from <b>Nimroz</b> province, case management was done. Health education sessions were conducted for all the cases. |

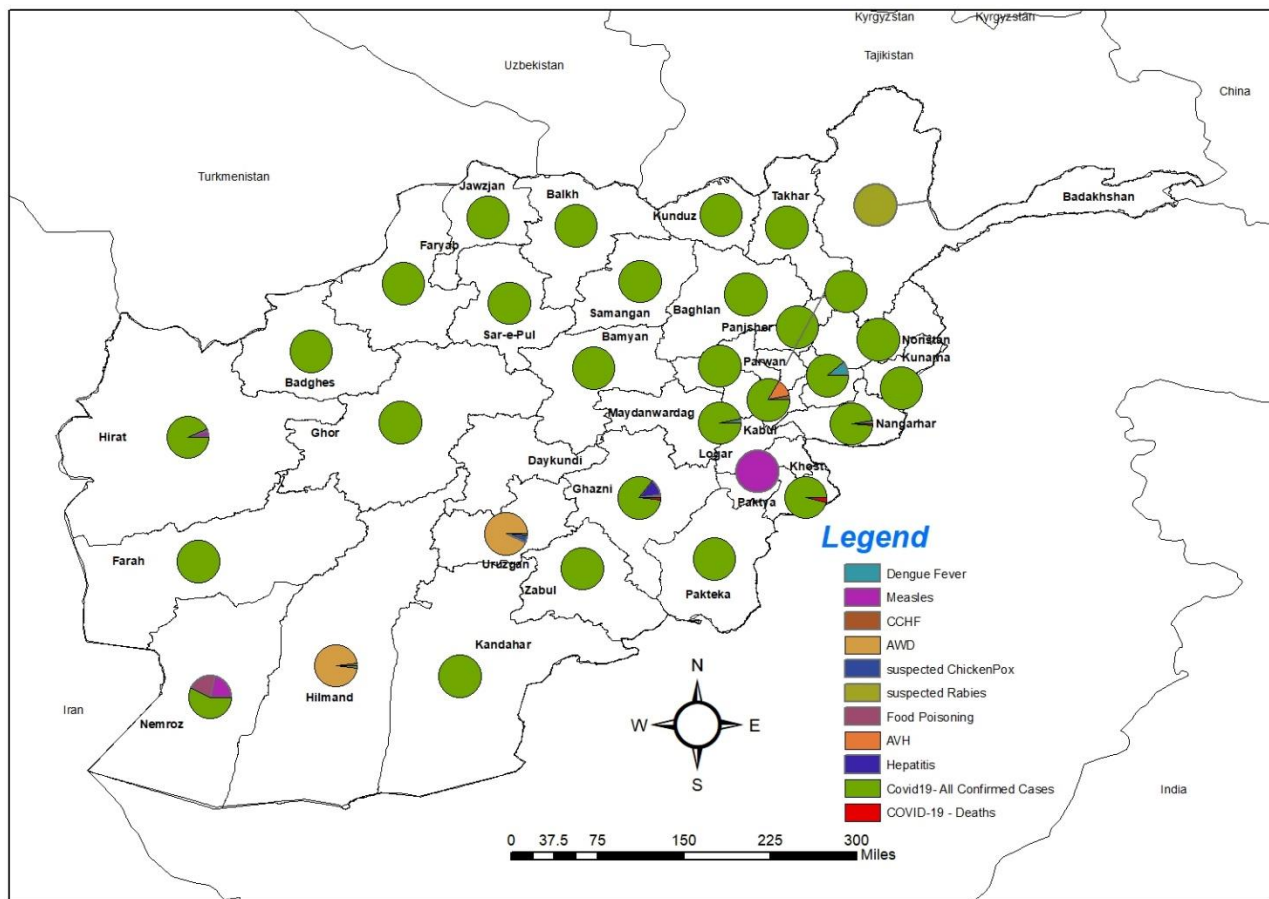
**Dog bite/Suspected Rabies outbreak from (Badakhshan) province**

| Reported dated | Province   | District | Village | Total cases | Total deaths | Recommendation/Action take   |
|----------------|------------|----------|---------|-------------|--------------|--|
| 24/10/2022     | Badakhshan | Fayzabad | Layawa  | 3           | 0            | During this week <b>01</b> Dog bite /suspected Rabies outbreak was reported from <b>Badakhshan</b> province, case management was done. Health education sessions were conducted for all the cases. |

**Table 4: Updated outbreaks report during 2022 (26 Dec 2021 to 29 October 2022)**

| <b>Disease/Event</b>        | <b>Count of Disease/Event</b> | <b>Sum of Lab Confirm</b> | <b>Sum of total Cases</b> | <b>Sum of Total Deaths</b> |
|-----------------------------|-------------------------------|---------------------------|---------------------------|----------------------------|
| Measles                     | 261                           | 175                       | 3680                      | 110                        |
| CCHF                        | 368                           | 105                       | 369                       | 11                         |
| Dog bites/Suspected Rabies  | 23                            | 1                         | 154                       | 0                          |
| Pertussis                   | 34                            | 0                         | 273                       | 10                         |
| Acute Watery Diarrhea       | 79                            | 21                        | 5123                      | 14                         |
| Food Poisoning              | 16                            | 0                         | 362                       | 2                          |
| Unknown Poisoning           | 1                             | 0                         | 5                         | 2                          |
| Scabies                     | 9                             | 0                         | 141                       | 0                          |
| Chickenpox                  | 32                            | 1                         | 352                       | 0                          |
| Leishmaniosis               | 3                             | 0                         | 67                        | 0                          |
| Cat bite suspected rabies   | 1                             | 0                         | 4                         | 0                          |
| Mumps                       | 5                             | 0                         | 51                        | 0                          |
| Diphtheria                  | 2                             | 0                         | 2                         | 0                          |
| Pneumonia                   | 1                             | 0                         | 25                        | 0                          |
| Dengue fever                | 20                            | 10                        | 22                        | 0                          |
| Skin disease                | 1                             | 0                         | 3                         | 0                          |
| Anthrax                     | 3                             | 0                         | 10                        | 1                          |
| Confirmed Malaria           | 8                             | 8                         | 1967                      | 0                          |
| Acute Viral Hepatitis (AVH) | 3                             | 0                         | 16                        | 0                          |
| COVID-19                    | 1                             | 1                         | 47944                     | 529                        |
| <b>Grand Total</b>          | <b>877</b>                    | <b>322</b>                | <b>60576</b>              | <b>679</b>                 |

**Figure 4: COVID-19, Suspected Measles, Suspected CCHF, Suspected chickenpox, Dog bite/suspected rabies, AWD, Suspected AVH, Food poisoning cases and deaths during the week 43<sup>rd</sup>**



### Laboratory surveillance:

A total of **6212** specimens were collected and shipped to CPHL and other regional laboratories. Out of which **844** specimens were confirmed for COVID-19, **34** specimens were confirmed for Measles, **40** specimens were confirmed for Malaria, **37** specimens were confirmed for Dengue fever, **21** specimens were confirmed for Cholera, 07 specimens were confirmed for Chickenpox, 01 specimen was confirmed for Brucellosis (Follow-up by the CPHL is going on).

### Influenza Surveillance activities:

In Epidemiological week 43<sup>rd</sup> 2022, we have received Epidemiological reports from 09 out of 09 sentinel sites. (Kabul, Kandahar, Balkh, Herat, Bamyan, Baghlan, Nangarhar, Kapisa and Paktya). Out of all new hospital admissions, 240(6.9 %) Severe Acute Respiratory Infections cases were reported and 65% were under 5 years old. The proportion of SARI cases were slightly increased compared to week 42<sup>nd</sup> 2022. 07 SARI-associated deaths were reported this week. At the 09 provincial levels, the top sentinel sites with the highest proportion of SARI cases were Kabul (25.0 %), Bamyan (21.8%), Kapisa (18.4%) and Baghlan (15%) provinces. During this Epi-week, our field staff shipped 54 SARI and 36 ILI specimens to the National Influenza Center (NIC).

### COVID-19 Surveillance activities:

In this week, **5099** specimens were tested for suspected COVID-19. Out of which **844** specimens were confirmed for COVID-19 by RT-PCR.

- COVID-19 cases positivity rate was 16.5 % in this week, which increased 2% compared to previous week.
- Bed occupancy rate (BOR) at the national level was **49.2%**, which decreased 3.4 % compared to last week.
- Out of **844** confirmed cases, **1564** contacts of **600** confirmed cases were traced that were mostly family members with an average of 3 contacts per one case, and will be continued until 14 days of their last contact with the confirmed cases. Also, surveillance screening teams screened all the passengers in the points of entry for fever. In addition, health education was conducted for them, about **49,329** passengers have been screened for COVID-19 in the points of entry of five provinces (Balkh, Nangarhar, Herat, Kandahar and Nimroz).

### Challenges:

- Dengue fever cases are in the increasing trend in the country, especially in the east part of the country
- Measles cases are increased compared to the previous week, in this week **568** suspected measles cases were reported
- Weak preparedness for the outbreak investigation and response in the provincial level

### Recommendations:

- Strong preventive and control measure are needed for the prevention and control of dengue fever cases in the country
- Measles vaccination and preventive measures should be strengthened and the measles response strategy should be revised
- RRTs should be established in the provincial level to timely and properly investigate and respond the diseases outbreaks
  - **EPI:** As the surveillance system detected **568** suspected Measles cases with 01 death at the national level, so further prevention and control measures should be conducted by the EPI team.
- The findings should be analyzed further in different levels and appropriate actions to be taken by the concerned departments.