

Summary:

- Out of **613** functional Surveillance sentinel sites, **611 (99.7%)** have submitted reports this week.
- A total of **717,073** new consultations, of which **287,536 (40.1%)** were due to Surveillance targeted diseases. That included **150,490 (52.3%) males** and **137,046 (47.7%) females**. Also, **130,916 (45.5%)** people under five years old and **156,620 (54.5%)** five years old and over were reported this week.
- The main causes of consultations this week were ARI Cough & Cold (**202,956 = 28.3%** cases out of total new consultations), Acute Diarrheal Diseases (**36,880 = 5.1%**) cases out of total new consultations, and Pneumonia (**41,919= 5.8%** cases out of total new consultations).
- A total of **365** deaths were reported this week, of which **108 (29.6%)** deaths were due to surveillance-targeted diseases, which include **91 ARI Pneumonia** deaths, **06 Suspected Meningitis/ Severely ill Child** deaths, **05 Acute Viral Hepatitis** deaths, **02 COVID-19** deaths, **03 suspected Measles** deaths and **01 Neonatal Tetanus** death.
- In addition, during this week, **28** outbreaks were reported: **11 Clinical Chickenpox** outbreaks were reported from Badghis, Bamyan, Herat, Logar, Nimroz, Parwan, Paktia, Takhar and Urozgan provinces, **07 suspected Measles** outbreaks were reported form Balkh, Ghazni, Helmand, Paktia, Urozgan, Wardak and Zabul provinces, **04 Clinical Scabies** outbreaks were reported from, Logar, Panjshir, Parwan and Zabul provinces, **03 Dog bite/ suspected Rabies** outbreaks were report from Helmand and Urozgan provinces, **02 Clinical Mumps** outbreaks were reported form Daykundi and Panjshir provinces and **01 Clinical Impetigo** outbreak was reported form Badakhshan province.

Moreover, **202** COVID-19 confirmed cases and **822** suspected Measles cases (IBS) were reported at the national level.

• **Figure1: Surveillance/NDSR Sentinel Sites with GPS location by type of Health Facility, 2024**

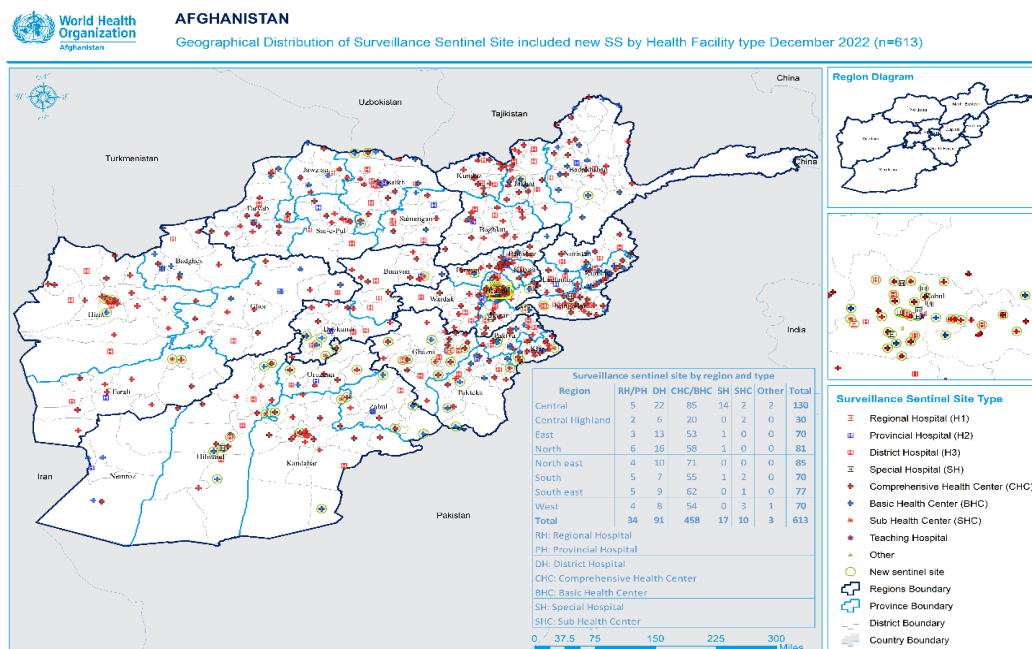


Table 1: Coverage of NDSR Surveillance System

Type of Health Facility	RH	PH	DH	CHC	BHC	NH/ Special Hospital	SHC	Other	Total
Total Health Facilities (HF)	8	27	91	437	900	36	1,106	2,093	4,698
HF covered by NDSR-Plus	8	26	90	348	111	17	10	3	613

Indicator - based Surveillance (IBS):

The indicator-based surveillance component of the NDSR, reports 17 priority conditions/infectious diseases from sentinel sites on weekly basis. The data is compared with previous weeks and the corresponding weeks of the previous three years, and the alert and epidemic thresholds are checked to see if disease incidence has crossed these levels and necessary action is initiated.

Figure 2: A

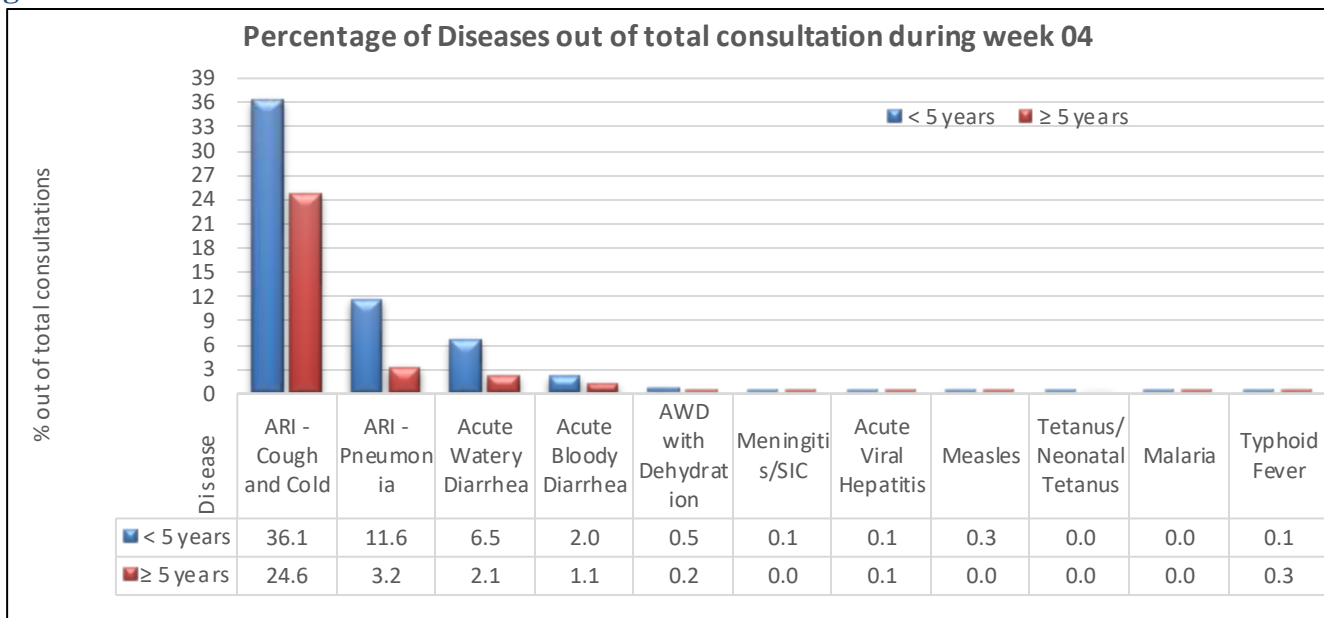
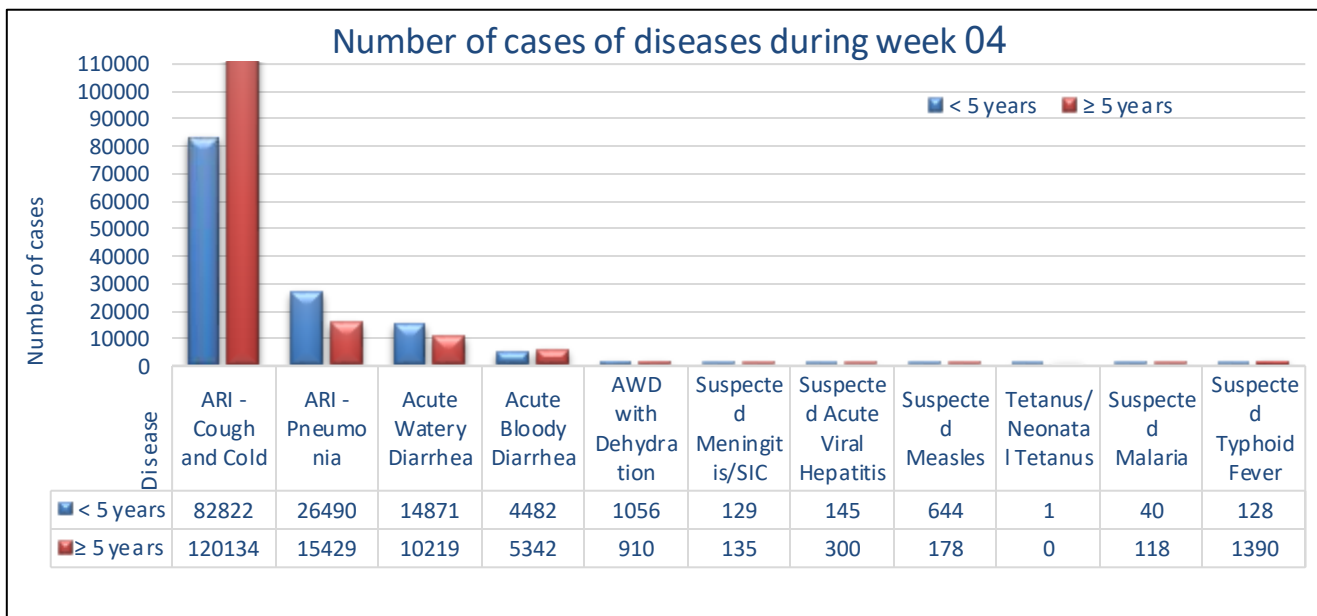


Figure 2: B



Seasonal Diseases:

Figure 3: A

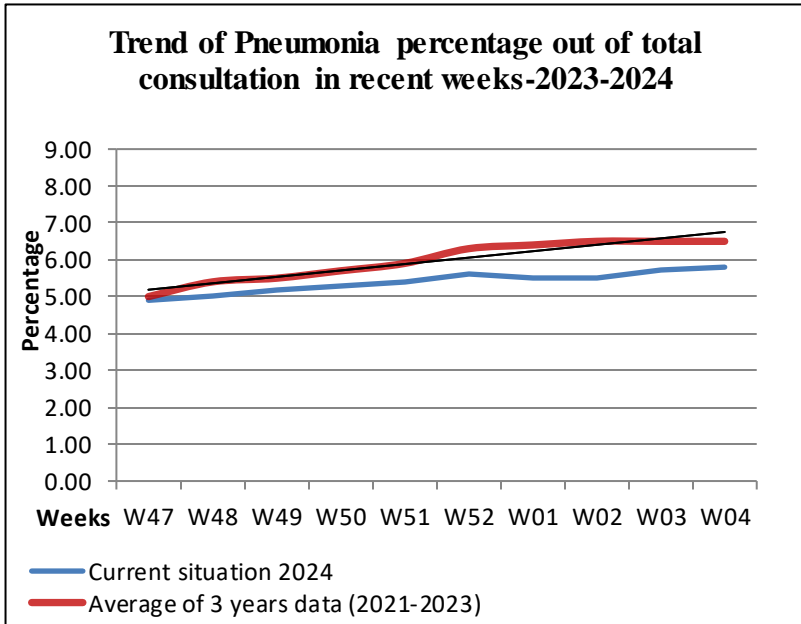


Figure 3: B

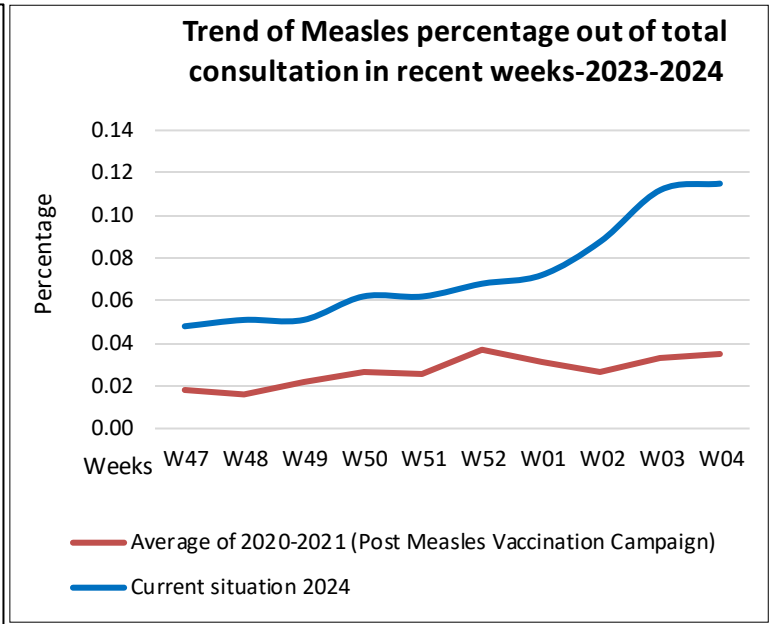


Figure 3: C

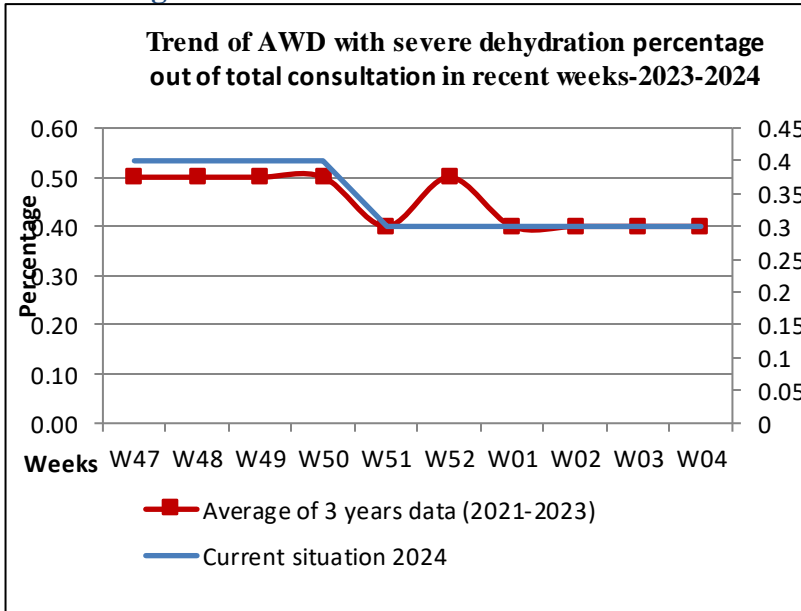


Figure 3: D

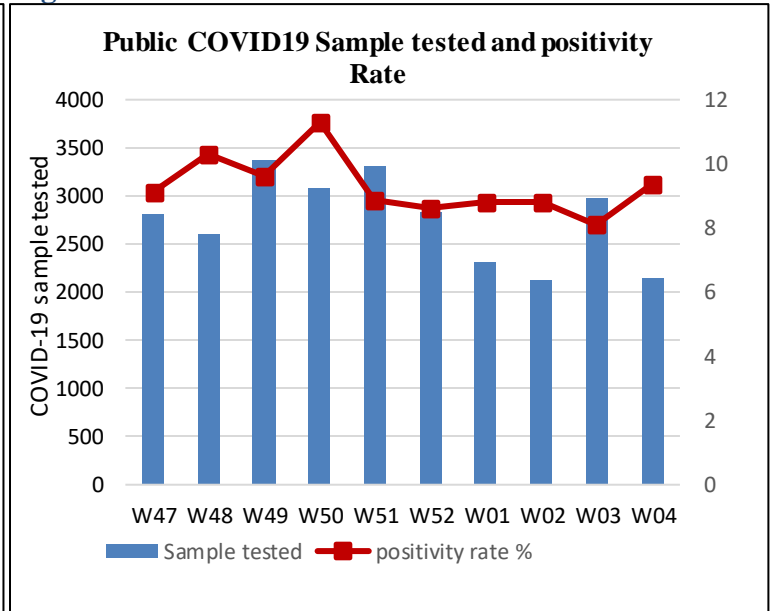


Table 3: Outbreaks in Week 04th 2024:

AFGHANISTAN INFECTIOUS DISEASE OUTBREAKS REPORT Epidemiological week # 04-2024								
Event / Diseases Name	Reported date	Province	District	Village	Total Cases	Total Deaths	Vaccination coverage, If VPD	
							Related HF reported coverage	Field Estimated Coverage
Clinical Chickenpox	22/01/24	Badghis	Jawand	saidal	14	0	NA	NA
	24/01/24	Bamyan	Panjab	Sarband, Guli	19	0	NA	NA
	19/01/24		Shebar	Ahangar, Kafari	18	0	NA	NA
	25/1/2024	Herat	Kuhsan	Qala e Zabet	15	0	NA	NA
	21/01/24		City	Female prison	20	0	NA	NA
	21/01/24	Logar	Puli Alam	Now Abad Honi Saydan	5	0	NA	NA
	22/01/24	Nimroz	Zarang	Palan Panj	6	0	NA	NA
	22/01/24	Parwan	Bagram	Urchi	11	0	NA	NA
	21/01/24	Paktia	Gardez	Mominkhil	14	0	NA	NA
	23-1-24	Takhar	Taloqan	Arabab Gulmarad	37	0	NA	NA
	24/01/24	Urozgan	Tarin-Kot	Sofian	10	0	NA	NA
Suspected Measles	23/01/24	Balkh	Mazar-I-Sharif City	Faqirabad	23	0	21%	90%
	26/01/24	Ghazni	Ghazni	Shahrak-I-Albironi	16	0	75%	30%
	20/01/24	Helmand	Mosa-Qala	Shah Faisal	10	0	79%	45%
	23/01/24	Urozgan	Tarin-Kot	Share-Now	14	0	78%	84%
	23/01/24	Paktia	Dande Pathan	Sarhady	14	0	80%	50%
	22/01/24	Wardak	Said Abad	Masti Khil	8	0	74%	75%
	23/01/24	Zabul	Meezan	Fottay	17	2	95%	42%
Clinical Scabies	24/01/24	Logar	Puli Alam	Babus	18	0	NA	NA
	27/01/24	Panjshir	Center	Debadqul	8	0	NA	NA
	23/01/24	Parwan	Charikar	Parcha-e-11	21	0	NA	NA

	25/01/24	Zabul	Qalat	Hafiz Nazr gull Masjid	14	0	NA	NA
Dog bite / Suspected Rabies	20/01/24	Helmand	Washir	Sai Pashta	8	0	NA	NA
	21/01/24		Nahri-Saraj	Jabar Masjid	17	0	NA	NA
	22/01/24	Urozgan	Tarin-Kot	Janan and Amanullah	9	0	NA	NA
Clinical Mumps	24/01/24	Daykundi	NILI	Aspdawan	7	0	NA	NA
	23/01/24	Panjshir	Rukha	Debdeya	8	0	NA	NA
Clinical Impetigo	22/01/24	Badakhshan	Kishum	Wakhshi	51	0	NA	NA

Figure 4 Clinical Chickenpox, Clinical Measles, Clinical Scabies, Dog bite/ suspected Rabies, Clinical Mumps, Clinical Impetigo, COVID-19 Cases, and deaths during the week 04th 2024

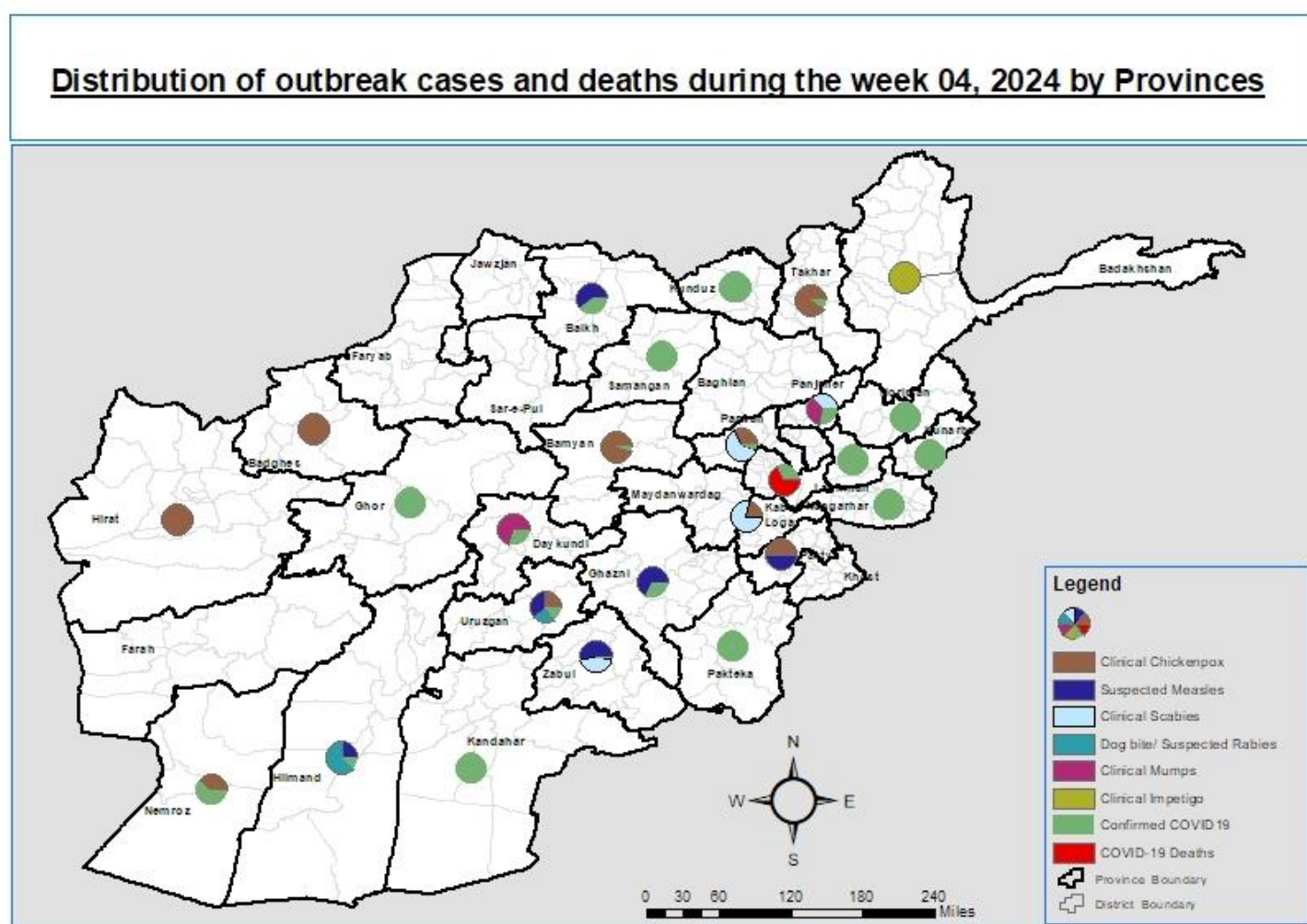


Table 4: Updated cumulative outbreak reports during 2024 (31 Dec 2023 to 27 Jan 2024)

Disease/Event	Disease/Event	Lab Confirm	Total Cases	Total Deaths
Scabies	29	0	864	0
Measles	21	5	300	7
Suspected Chickenpox	49	1	710	0

Dog bites/Suspected Rabies	8	0	78	0
Pertussis	1	0	6	0
Mumps	5	0	235	0
Impetigo	2	0	79	0
Leishmaniasis	1	0	6	0
Pink Eye	1	0	5	0
ARI/Pneumonia	1	0	8	5
Food Poisoning	1	0	12	0
Dengue Fever	1	1	38	0
Grand Total	120	7	2341	12

Laboratory surveillance:

A total of **3404** specimens were collected and shipped to CPHL and other regional laboratories. Out of which **05** specimens were confirmed for AWD, **28** specimens were confirmed for Acute Viral Hepatitis and **66** specimens were confirmed for Measles, **22** specimens were confirmed for Dengue Fever and **13** specimen was confirmed for Acute Influenza (Follow-up by the CPHL is going on).

Influenza Surveillance activities:

In Epidemiological week 4th 2024, we have received reports from 10 out of 10 sentinel sites (Kabul, Kandahar, Balkh, Herat, Bamyan, Baghlan, Nangarhar, Kapisa, Paktia and Badakhshan). Out of all new hospital admissions, 1093 (16.6%) Severe Acute Respiratory Infections cases were reported and 67% were under 5 years old. The proportion of SARI cases was increased compared to week 3rd 2024. 31 SARI-associated deaths were reported this week. At the 10 provincial levels, the top sentinel sites with the highest proportion of SARI cases were Kabul (46.0%), Kapisa (36.6%), and Nangarhar (34.7%) provinces. During this Epi-week, our field staff shipped 60 SARI and 40 ILI specimens to the National Influenza Center (NIC).

COVID-19 Surveillance activities:

This week, **2153** specimens were tested for suspected COVID-19. Out of which **202** specimens were confirmed for COVID-19 by RT-PCR.

- The COVID-19 case positivity rate was 9.4% this week, which increased 1.3% compared to the previous week.
- Out of **202 confirmed** cases, **252** contacts out of **61** were traced that were mostly family members, with an average of 4 contacts per case, and will be continued until 14 days after their last contact with the confirmed cases. Also, surveillance screening teams screened all the passengers at the points of entry for fever. In addition, health education was conducted for them. About **32,664** passengers have been screened for COVID-19 at the points of entry in two provinces (Kandahar and Nangarhar).

Challenges:

- Measles cases are still a public health concern in the country. This week, **924 (IBS+EBS)** Measles cases were reported to the surveillance system.
- Scabies cases are on increasing trend as a public health challenge due to unimproved lifestyle of the community.
- Chickenpox cases are on increasing trend, and it is recommended to provide its vaccine through the national EPI.

- Dog-bite cases are on increasing trend, and it is recommended to provide its control measure through the Zoonotic committee in national level.
- ARI cough and cold cases are on the same trend compared to the previous week.
- Pneumonia cases are on the increasing trend (0.1%) compared to the previous week.
- Diarrheal diseases are on the decreasing trend (0.2%) compared to the previous week.
- COVID-19 preventive and control measures should be strengthened.
- Public awareness regarding ARI prevention and control is needed.
- Vaccine preventable diseases (especially Measles and Pertussis vaccination and preventive measures) should be strengthened.
- The measles response strategy should be reviewed to respond to the current measles epidemic situation.
 - **EPI:** As the surveillance system detected **924 (IBS+EBS)** suspected Measles cases with 05 **(IBS+EBS)** deaths at the national level, further prevention and control measures should be conducted by the EPI team.
- The findings should be analyzed further at different levels, and appropriate actions should be taken by the concerned department.