

Summary:

- Out of 613 functional Surveillance sentinel sites, 613 (100%) have submitted reports this week.
- A total of 660,109 new consultations, of which 260,365 (39.4%) were due to Surveillance targeted diseases. That included 136,843 (52.6%) males and 123,522 (47.4%) females. Also, 117,482 (45.1%) people under five years old and 142,883 (54.9%) five years old and over were reported this week.
- The main causes of consultations this week were ARI Cough & Cold (182,272 = 27.6% cases out of total new consultations), Acute Diarrheal Diseases (32,642 = 4.9% cases out of total new consultations), and Pneumonia (39,793= 6% cases out of total new consultations).
- A total of 367 deaths were reported this week, of which 133 (36.2%) deaths were due to surveillance-targeted diseases, which include 116 ARI Pneumonia deaths, 05 Suspected Meningitis deaths, 09 suspected Measles deaths and 03 Acute Viral Hepatitis deaths.
- In addition, during this week, 30 outbreaks were reported: 14 Suspected Measles outbreaks were reported from Badghis, Jawzjan, Kabul, Logar, Nangarhar, Paktya, Paktika, Takhar and Zabul provinces, 07 Clinical Scabies outbreaks were reported from Farah, Kabul, Kapisa, Kunduz, Panjshir and Parwan provinces, 06 Clinical Chickenpox outbreaks were reported from Badakhshan, Bamyán, Panjshir and Urozgan provinces, 02 Dog bite/ suspected Rabies outbreaks were reported from Kapisa and Nangarhar provinces, 01 Clinical Leishmaniasis outbreak was reported from Wardak province.

Moreover, 233 COVID-19 confirmed cases and 1460 suspected Measles cases, and 09 deaths (IBS) were reported at the national level.

Figure 1: Surveillance/NDSR Sentinel Sites with GPS location by type of Health Facility, 2024

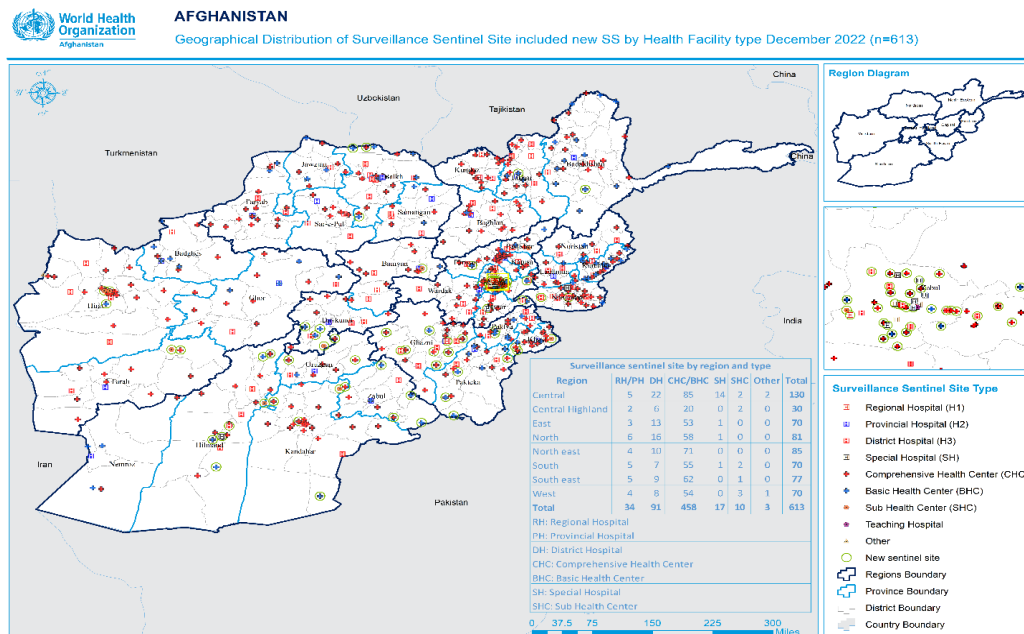


Table 1: Coverage of NDSR Surveillance System

Type of Health Facility	RH	PH	DH	CHC	BHC	NH/ Special Hospital	SHC	Other	Total
Total Health Facilities (HF)	8	27	91	437	900	36	1,106	2,093	4,698
HF covered by NDSR-Plus	8	26	90	348	111	17	10	3	613

Indicator - based Surveillance (IBS):

The indicator-based surveillance component of the NDSR, reports 17 priority conditions/infectious diseases from sentinel sites on weekly basis. The data is compared with previous weeks and the corresponding weeks of the previous three years, and the alert and epidemic thresholds are checked to see if disease incidence has crossed these levels and necessary action is initiated.

Figure 2: A

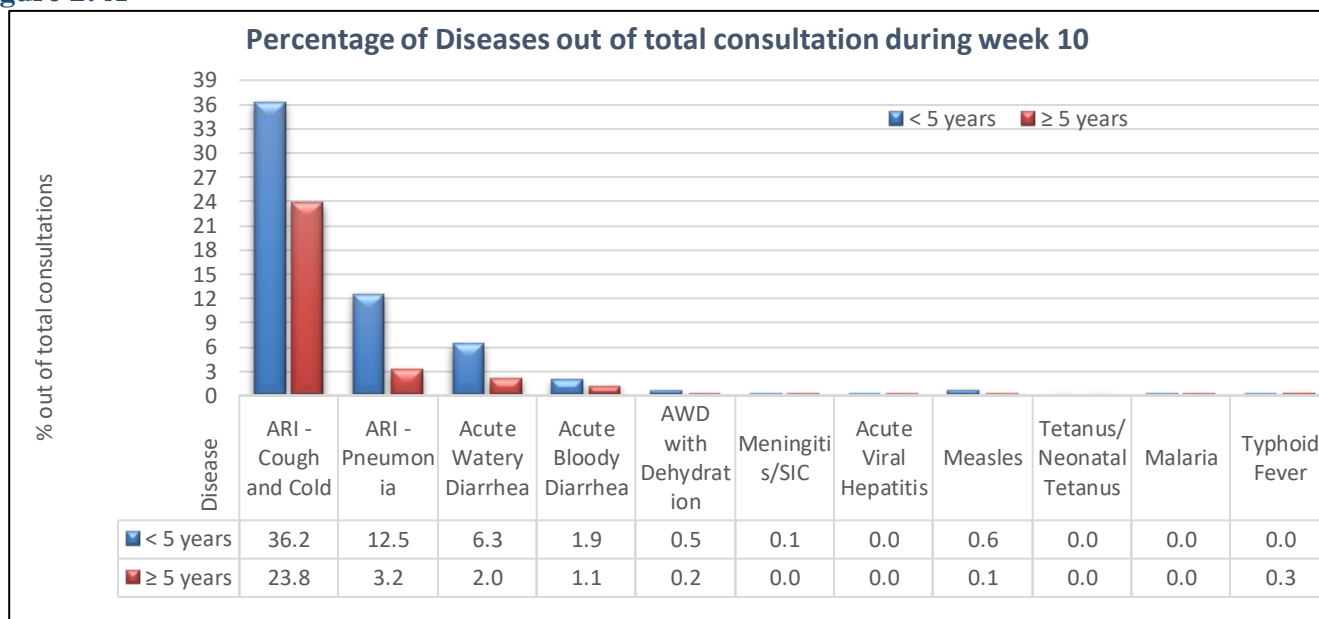
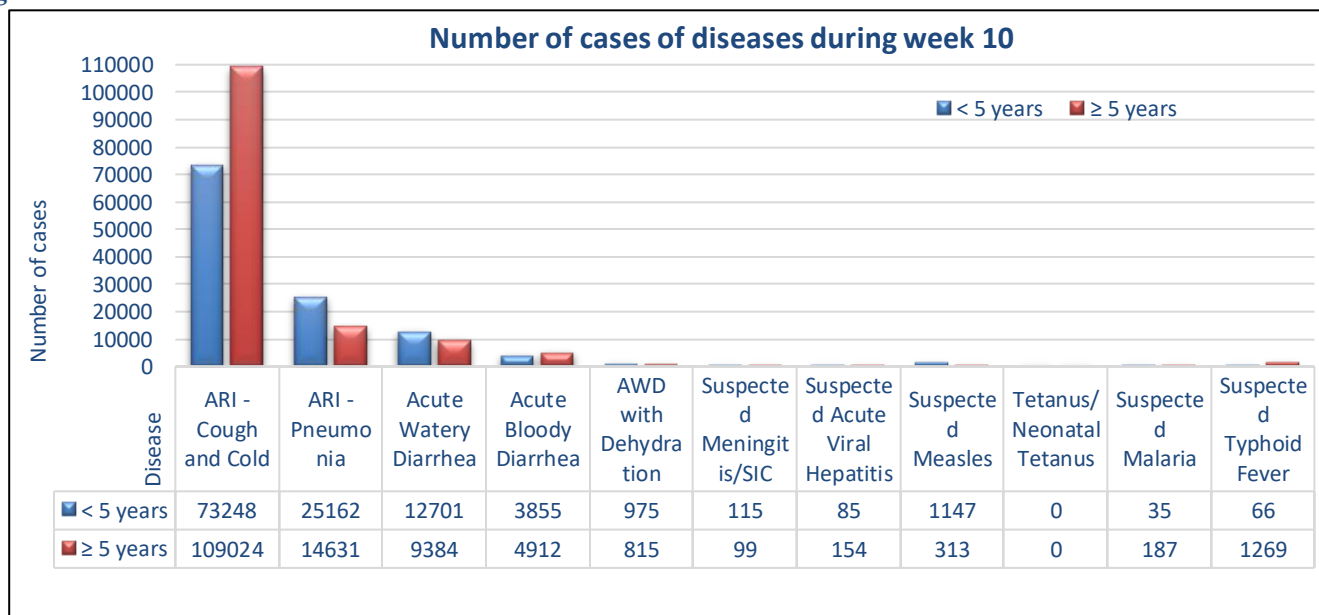


Figure 2: B



Seasonal Diseases:

Figure 3: A

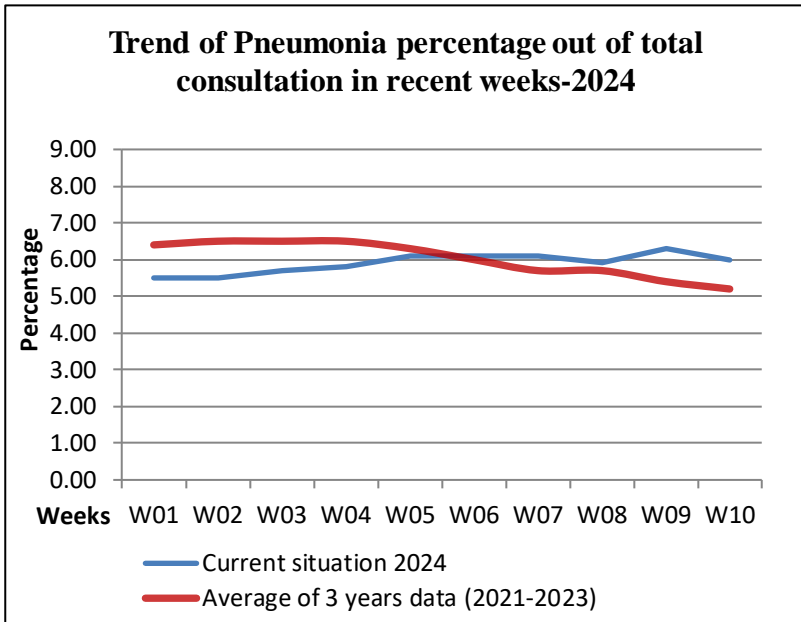


Figure 3: B

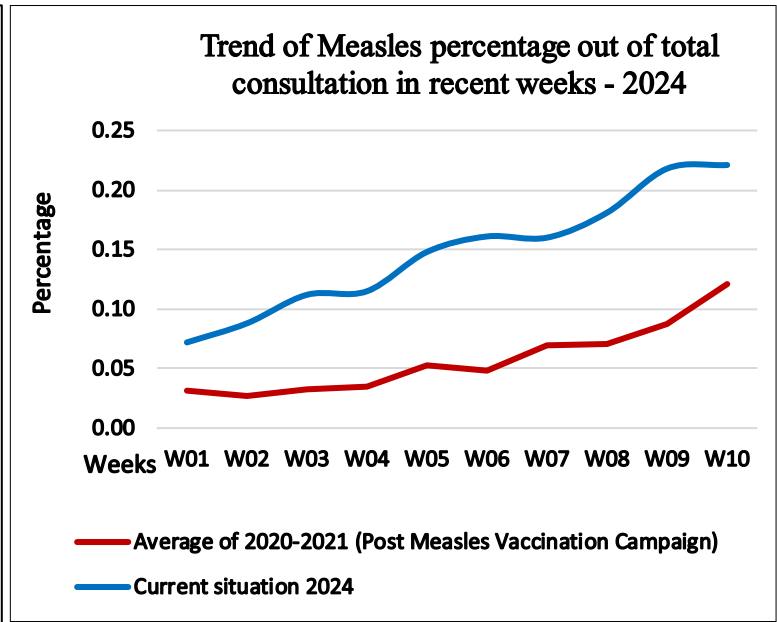


Figure 3: C

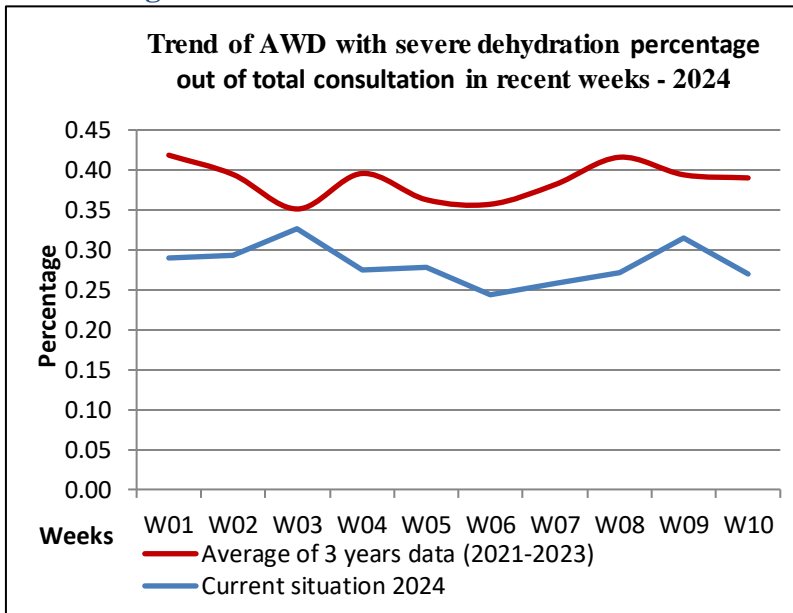


Figure 3: D

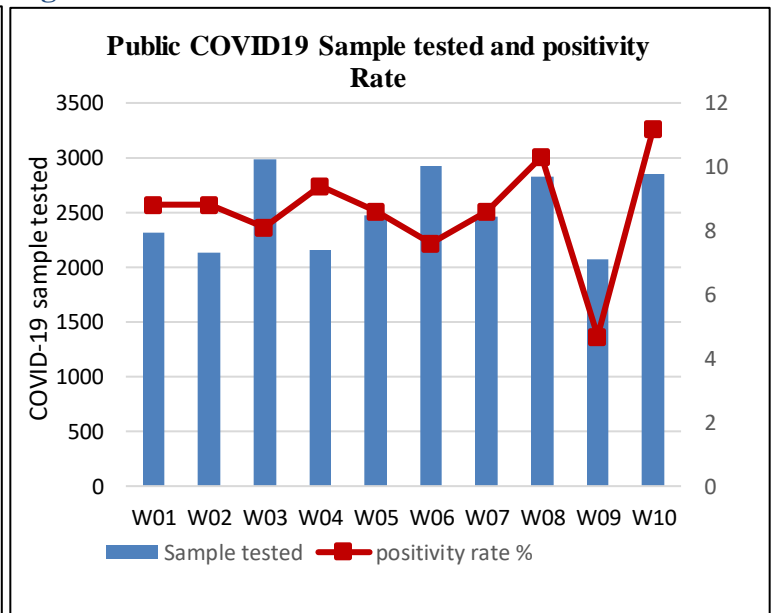


Table 3: Outbreaks in Week 10th 2024:

AFGHANISTAN INFECTIOUS DISEASE OUTBREAKS REPORT Epidemiological week # 10-2024								
Event / Diseases Name	Reported date	Province	District	Village	Total Cases	Total Deaths	Vaccination coverage, If VPD	
							Related HF reported coverage	Field Estimated Coverage
Suspected Measles	07/03/24	Badghis	Bala Murghab	Qolaqay	10	1	66 %	0 %
	03/02/24		Pulikhumeri	Bagh-E-Shamal	7	0	85 %	71 %
	03/03/24	Jawzjan	Mengajik	Haroon 2	8	0	70 %	50 %
	02/03/24	Kabul	Surobi	Loy Kalay - Naghlo	9	0	65 %	40 %
	04/03/24		5	Chahar Rahi Qambar	6	0	60 %	85 %
	08/03/24		Bagrami	Pashtoonabad	7	0	94 %	70 %
	05/03/24	Logar	Baraki Barak	Baraki Rajan	7	0	80 %	50 %
	03/03/34	Nangarhar	Behsood	Dobila	12	0	100 %	40 %
	07/03/24	Paktia	Gardez	Chawni	11	0	80 %	30 %
	07/03/24		Chamkani	Gawakhil	13	0	80 %	25 %
	08/03/24	Paktika	Yousuf Khel	Mosh Khel	7	0	86 %	50 %
	03/07/24	Takhar	Taloqan	Nahr Chaman And Khaskapa	6	0	90 %	80 %
	03/03/24	Zabul	Meezan	Darooshak	23	0	NA (SHC)	17 %
	06/03/24		Qalat	Jawhar	22	0	88 %	9 %
	Clinical Scabies	04/03/24	Farah	Farah City	Rigy	9	0	NA
03/03/24		Kabul	Shakardara	Jangikheil	22	0	NA	NA
05/03/24			Chahar Asyab	Abdul Rahmankheil	20	0	NA	NA
06/03/24		Kapisa	Tagab	Sharak	10	0	NA	NA
03/03/24		Kunduz	Aliabad	Darul Hefaz Hanafia	33	0	NA	NA
03/03/24		Panjshir	Center	Changaram	9	0	NA	NA
07/03/24		Parwan	Bagram	Panch Qalla	17	0	NA	NA
Clinical Chickenpox	03/03/24	Badakhshan	Kishum	Pasha Darah	33	0	NA	NA
	03/03/24	Bamyan	Center	Jerkhoshkak	10	0	NA	NA

	03/04/24		Center	Qalay Bay And Qalay Sayed	33	0	NA	NA
	03/06/24		Center	Khaja Kheder And Minara	20	0	NA	NA
	05/03/24	Panjshir	Center	Aziz Big Khil	6	0	NA	NA
	05/03/24	Urozgan	Tarin-Kot	Shahre-Now	26	0	NA	NA
Dog bite/ suspected Rabies	06/03/24	Kapisa	Center	Ghani Khail	7	0	NA	NA
	03/03/34	Nangarhar	Batikot	Barikab	8	0	NA	NA
Clinical Leishmaniosis	02/03/24	Wardak	Said Abad	Lachi Khil	49	0	NA	NA

Figure 4: Suspected Measles, Clinical Scabies, Clinical Chickenpox, Dog bite/suspected Rabies, Clinical Leishmaniosis, COVID-19 Cases, and deaths during the week 10th 2024.

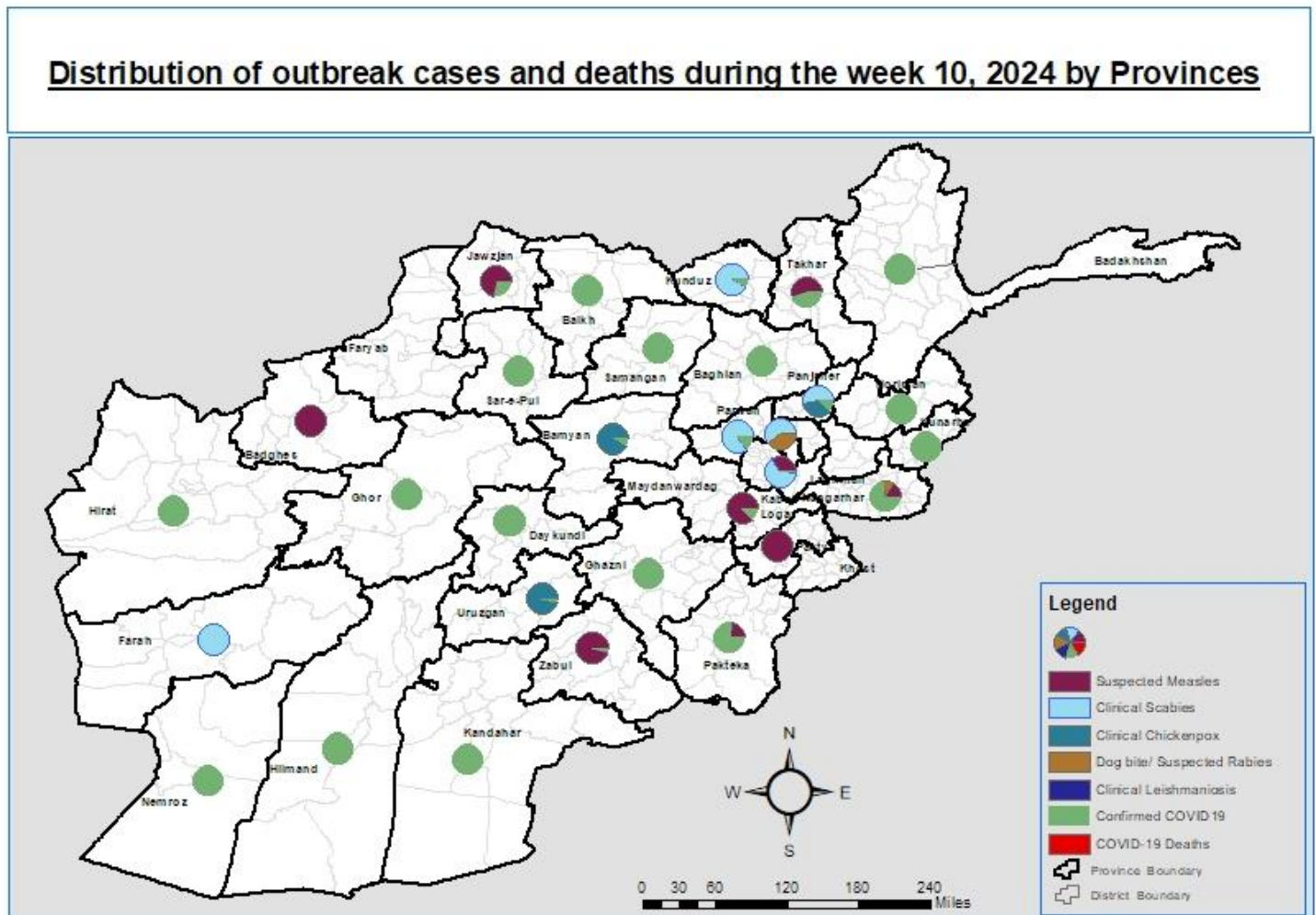


Table 4: Updated cumulative outbreak reports during 2024 (31 Dec 2023 to 09 March 2024)

Disease/Event	Disease/Event	Lab Confirm	Total Cases	Total Deaths
Scabies	122	0	4169	0
Measles	95	51	1143	11
Suspected Chickenpox	109	1	1880	0
Dog bites/Suspected Rabies	23	0	178	0
Pertussis	2	0	16	0
Mumps	12	0	394	0
Impetigo	2	0	79	0
Leishmaniasis	2	1	55	0
Pink Eye	3	0	29	0
ARI/Pneumonia	3	0	88	5
Food Poisoning	2	0	20	0
Dengue Fever	1	1	38	0
Typhoid Fever	1	0	10	0
CCHF	1	1	2	0
ARI cough and cold	1	0	55	0
Grand Total	379	55	8156	16

Laboratory surveillance:

A total of **4578** specimens were collected and shipped to CPHL and other regional laboratories. Out of which **18** specimens were confirmed for Acute Viral Hepatitis, **255** specimens were confirmed for Measles, and **04** specimens was confirmed for Malaria (Follow-up by the CPHL is going on).

Influenza Surveillance activities:

In Epidemiological week 10th 2024, we have received reports from 10 out of 10 sentinel sites (Kabul, Kandahar, Balkh, Herat, Bamyan, Baghlan, Nangarhar, Kapisa, Paktia and Badakhshan). Out of all new hospital admissions, 1138 (19.8%) Severe Acute Respiratory Infections cases were reported and 60% were under 5 years old. The proportion of SARI cases was decreased compared to week 9th 2024. 26 SARI-associated deaths were reported this week. At the 10 provincial levels, the top sentinel sites with the highest proportion of SARI cases were Kabul (49.0%), Kapisa (45.3%), and Paktia (36.0%) provinces. During this Epi-week, our field staff shipped 60 SARI and 40 ILI specimens to the National Influenza Center (NIC).

COVID-19 Surveillance activities:

This week, **2847** specimens were tested for suspected COVID-19. Out of which **233** specimens were confirmed for COVID-19 by RT-PCR.

- The COVID-19 case positivity rate was 8.2% this week, which increased 1.8% compared to previous week.
- Out of **233 confirmed** cases, **342** contacts out of **104** were traced that were mostly family members, with an average of 4 contacts per case, and will be continued until 14 days after their last contact with the confirmed cases. Also, surveillance screening teams screened all the passengers at the points of entry for fever. In addition, health education was conducted for them. About **41016** passengers have been screened for COVID-19 at the points of entry in three provinces (Kandahar, Herat and Nangarhar).

Challenges:

- Measles cases are still a public health concern in the country.
- Scabies cases are on increasing trend as a public health challenge due to unimproved lifestyle of the community.
- Chickenpox cases are on increasing trend, and it is recommended to provide its vaccine through the national EPI.
- Dog-bite cases are on increasing trend, and it is recommended to provide its control measure through the Zoonotic committee in national level.
- ARI cough and cold cases are on the decreasing trend (0.5%) compared to the previous week.
- Pneumonia cases are on the decreasing trend (0.3%) compared to the previous week.
- Diarrheal diseases are on the decreasing trend (0.1%) compared to the previous week.
- COVID-19 preventive and control measures should be strengthened.
- Vaccine preventable diseases (especially Measles and Pertussis vaccination and preventive measures) should be strengthened.
- The measles response strategy should be reviewed to respond to the current measles epidemic situation.
 - **EPI:** As the surveillance system detected **1607 (IBS+EBS)** suspected Measles cases with **10 (IBS+EBS)** deaths at the national level, further prevention and control measures should be conducted by the EPI team.
- The findings should be analyzed further at different levels, and appropriate actions should be taken by the concerned department.